



Your **definitive** source
for quality pre-owned
equipment.

Artisan Technology Group

(217) 352-9330 | sales@artisanTG.com | artisanTG.com

Full-service, independent repair center

with experienced engineers and technicians on staff.

We buy your excess, underutilized, and idle equipment

along with credit for buybacks and trade-ins.

Custom engineering

so your equipment works exactly as you specify.

- Critical and expedited services
- In stock / Ready-to-ship
- Leasing / Rentals / Demos
- ITAR-certified secure asset solutions

Expert team | Trust guarantee | 100% satisfaction

All trademarks, brand names, and brands appearing herein are the property of their respective owners.

Find the *Spirent / Consultronics / DLS Testworks NSA 400* at our website: **Click [HERE](#)**

Operating Manual

NSA 400

ADSL Wideband Noise Generator

Revision 6
February 24, 2000

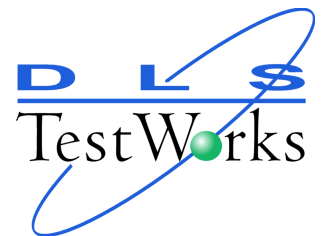


TABLE OF CONTENTS

1 INTRODUCTION	1
1.1 ABOUT THE NSA 400 ADSL NOISE GENERATOR	1
1.2 ABOUT THIS MANUAL.....	2
2 QUICK START	3
3 GETTING STARTED.....	4
3.1 RECEIVING AND UNPACKING THE UNIT	4
3.2 WHAT YOU NEED.....	4
3.3 NSA 400 FRONT PANEL.....	5
3.3.1 NSA 400 Rear Panel	6
3.4 CONNECTING POWER TO THE NSA 400	6
3.4.1 Remote Control	7
3.4.2 IEEE 488 Operation.....	7
3.4.3 Serial Port Operation.....	7
3.5 ANALOG CONNECTIONS	7
3.5.1 Differential Noise Output	7
3.5.2 Longitudinal Noise Output.....	8
3.5.3 External Noise Input	8
4 NSA 400 SOFTWARE	9
4.1 SOFTWARE INSTALLATION.....	9
4.1.1 To Install National Instruments GPIB Software (IEEE 488 operation only).....	9
4.1.2 To Install the GPIB-PCII/IA Card (IEEE 488 operation only).....	10
4.1.3 How to Check if the NI card is installed properly	11
4.1.4 Configuring Windows / National Instruments GPIB card:	11
4.1.5 To Install the DLS&NSA400 Software.....	14
4.2 OPERATING TWO OR MORE UNITS, FROM THE 400 SERIES, CONCURRENTLY	15
4.3 MAIN SCREEN	15
4.4 UNIT CONFIGURATION.....	16
4.5 EDITING IMPAIRMENTS SCREEN	16
4.6 STANDARD SETTINGS	18
4.7 IMPULSE CONTROL	19

5 NSA 400 ADSL NOISE GENERATOR DESCRIPTION	20
5.1 IMPAIRMENT GENERATORS	21
5.2 DOWNLOADABLE SHAPES	22
5.3 STANDARDS IMPLEMENTATION.....	22
5.3.1 Basic Rate Testing, ANSI T1E1 T1.601 standard	22
5.3.2 HDSL Rate Testing, ANSI Technical Report on HDSL	22
5.3.3 HDSL2 Rate Testing, ANSI Proposed Working Draft for HDSL2 Standard (T1E1.4/98-268).....	23
5.3.4 ADSL Rate Testing, ANSI T1.413, Issue I and II	23
5.3.5 ADSL Rate Testing, ITU Standard for G. Lite	23
5.3.6 Basic Rate Testing, ETSI TS 102 080 ISDN Standard	23
5.3.7 HDSL Rate Testing, ETSI ETR 152 HDSL Standard	24
5.3.8 European ADSL rate testing, ETSI ETR 328 ADSL Standard	24
5.4 INDIVIDUAL IMPAIRMENTS	24
5.4.1 Output Stage.....	28
5.4.2 Crosstalk Generators A and B.....	28
5.4.3 Crosstalk Generator C.....	35
5.4.4 Shaped Noise Generator.....	41
5.4.5 Flat White Noise Generator	41
5.4.6 Impulse Generator.....	41
5.4.7 Powerline Related Impairments	41
5.4.7.1 Metallic Noise	42
5.4.7.2 Longitudinal Noise	42
5.4.7.3 DLS 200 Compatible Mode	44
6 REMOTE CONTROL	45
6.1 IEEE 488 INTERFACE.....	45
6.1.1 IEEE 488.1 Interface functions supported	45
6.1.2 IEEE 488 Address.....	46
6.1.3 The Service Request (SRQ) Line	47
6.2 RESETTING THE NSA 400.....	47
6.2.1 Message Terminators	49
6.2.2 Example using the IEEE 488 Interface	49
6.3 RS-232 SERIAL INTERFACE	50
6.3.1 Message Terminators	51
6.3.2 Example using the RS-232 Interface.....	51
6.4 DATA FORMATS	52
6.5 COMMAND SYNTAX.....	53

6.6 DEVICE DEPENDENT COMMAND SET	54
6.6.1 :SYStem:CALibration:DATE/EXPIry <date>	55
7 IMPAIRMENTS COMMANDS SUMMARY.....	56
8 IMPAIRMENTS COMMANDS DETAILS.....	59
8.1 OUTPUT STAGE.....	59
8.2 LOW FREQUENCY CROSSTALK GENERATORS (XTALKA AND XTALKB).....	59
8.2.1 Xtalk Generator A - Type	60
8.2.2 Xtalk Generator A - Level.....	60
8.2.3 Xtalk Generator A – Program.....	60
8.2.4 Xtalk Generator B - Type.....	61
8.2.5 Xtalk Generator B - Level.....	61
8.2.6 Xtalk Generator B – Program	61
8.3 HIGH FREQUENCY CROSSTALK GENERATOR (XTALKC).....	61
8.3.1 Xtalk Generator C - Type.....	62
8.3.2 Xtalk Generator C - Level.....	63
8.3.3 Xtalk Generator C – Program	63
8.4 SHAPED NOISE GENERATOR.....	63
8.4.1 Shaped Noise Generator - Type	63
8.4.2 Shaped Noise Generator - Level.....	64
8.4.3 Shaped Noise Generator – Program.....	64
8.5 FLAT WHITE NOISE GENERATOR	64
8.5.1 Flat White Noise Generator - State	64
8.5.2 Flat White Noise Generator - Level	65
8.6 IMPULSES.....	65
8.6.1 Impulses - Type	65
8.6.2 Impulses - Width.....	65
8.6.3 Impulses - Level	66
8.6.4 Impulses - Rate.....	66
8.6.5 Impulses - Single Shot Trig	67
8.7 POWERLINE RELATED IMPAIRMENTS	67
8.7.1 Metallic Noise	67
8.7.1.1 Tone Generator - Harmonic #1 Frequency	67
8.7.1.2 Tone Generator - Harmonic #2 Frequency	68
8.7.1.3 Tone Generators - ANSI T1.601 Level Offset.....	68
8.7.2 Longitudinal Noise.....	68
8.8 DLS 200 MODE	69
8.9 QUIET.....	69

NSA 400 Operating and Reference Manual

8.10 SENDING DOWNLOADABLE SHAPES FILES TO THE NSA 400.....	70
9 COMMON COMMAND SET	74
9.1 STATUS REPORTING.....	79
9.1.1 Status Byte Register (STB).....	80
9.1.2 Event Status Register (ESR).....	80
9.2 NSA 400 SYNCHRONIZATION	81
10 FUSE CONFIGURATION	83
11 TROUBLE SHOOTING.....	84
11.1 NSA 400 SELF-TEST.....	84
11.2 POWER/REMOTE LED	84
11.3 SERIAL COMMUNICATION PROBLEMS	85
11.4 IEEE 488 COMMUNICATION PROBLEMS.....	85
12 REFERENCES.....	86
13 WARRANTY	88
14 SHIPPING THE NSA 400.....	90
15 SPECIFICATIONS.....	91
15.1 GENERAL.....	91
15.2 IMPAIRMENTS GENERATORS	91
15.2.1 White Noise Generator.....	92
15.2.2 NEXT Generators A and B.....	92
15.2.3 NEXT Generator C.....	93
15.2.4 Shaped Noise Generator.....	94
15.2.5 Impulses	94
15.2.6 Powerline Related Metallic Noise	94
15.2.7 Longitudinal Noise.....	94
15.2.8 Externally Generated Signals.....	95
15.3 PHYSICAL	95
15.4 IEEE 488 REMOTE CONTROL	95
15.5 RS-232 REMOTE CONTROL	96
15.6 SYSTEM	96
15.7 OPTIONS	96

15.8 ELECTRICAL	96
15.8.1 AC Power.....	96
15.9 ENVIRONMENTAL	96
15.10 MECHANICAL	97
15.11 OPERATING CONDITIONS	97
16 SAFETY.....	98
16.1 INFORMATION.....	98
16.1.1 Protective Grounding (Earthing).....	98
16.1.2 Before Operating the Unit.....	98
16.1.3 Supply Power Requirements	98
16.1.4 Mains Fuse Type.....	99
16.1.5 Connections to a Power Supply.....	99
16.1.6 Operating Environment	99
16.1.7 Class of Equipment	99
16.2 INSTRUCTIONS	99
16.2.1 Before Operating the Unit.....	99
16.2.2 Operating the Unit	100
16.3 SYMBOLS.....	101
APPENDIX A - INTERPRETATION OF LEVEL UNITS.....	102
APPENDIX B - DLS 200 MODE	106
APPENDIX C - MEASUREMENTS	107
APPENDIX D - NOISE GENERATOR CONNECTIONS	109
APPENDIX E - COMMONLY ASKED QUESTIONS.....	113

Table of Figures

FIGURE 1 - NSA 400 FRONT PANEL.....5

FIGURE 2 - NSA 400 REAR PANEL.....6

FIGURE 3 - AT-GPIB/TNT + (GPIB CONTROLLER) PROPERTIES WINDOW12

FIGURE 4 - GPIB SETTINGS TAB13

FIGURE 5 - MAIN SCREEN.....15

FIGURE 6 - NSA 400 CONFIGURATION16

FIGURE 7 - EDITING IMPAIRMENTS SCREEN.....16

FIGURE 8 – LOAD IMPAIRMENTS COMBINATION FROM STANDARDS18

FIGURE 9 - IMPULSE CONTROL SCREEN19

FIGURE 10 - IMPAIRMENT GENERATORS BLOCK DIAGRAM.....21

FIGURE 11 - T1.601 NEXT.....29

FIGURE 12 - DSL NEXT.....29

FIGURE 13 - HDSL NEXT.....30

FIGURE 14 - HDSL + ADSL NEXT30

FIGURE 15 – T1.413 II EC ADSL UPSTREAM NEXT31

FIGURE 16 – T1.413 II EC ADSL UPSTREAM FEXT (9 KFT 26 AWG)31

FIGURE 17 – T1.413 II FDM ADSL UPSTREAM NEXT32

FIGURE 18 - ITU-T NA FDM ADSL DOWNSTREAM FEXT.....32

FIGURE 19 - ITU-T NA ADSL UPSTREAM FEXT33

FIGURE 20 - HDSL2 DOWNSTREAM NEXT (H2TUC)33

FIGURE 21 - HDSL2 UPSTREAM NEXT (H2TUR)34

FIGURE 22 - ADSL FEXT36

FIGURE 23 - MODEL A36

FIGURE 24 - MODEL B.....37

FIGURE 25 - T1 NEXT.....37

FIGURE 26 - INTERNATIONAL AMI.....38

FIGURE 27 - T1. 413 II T1 (AMI) NEXT38

FIGURE 28 - T1.413 II EC ADSL DOWNSTREAM NEXT39

FIGURE 29 - T1.413 II FDM ADSL DOWNSTREAM NEXT.....39

FIGURE 30 - T1.413 II FDM DOWNSTREAM FEXT (9KFT 26 AWG).....40

FIGURE 31 - ITU-T NA FDM ADSL DOWNSTREAM NEXT40

FIGURE 32 - ANSI LONGITUDINAL LOAD CONFIGURATION43

FIGURE 33 - ETSI LONGITUDINAL LOAD CONFIGURATION43

NSA 400 Operating and Reference Manual

FIGURE 34 - NSA 400 CONTROLLER IFC STRAP OPTION48

FIGURE 35 - EQUIPOTENTIALITY-FUNCTIONAL EARTH TERMINAL101

FIGURE 36 - PROTECTIVE GROUNDING CONDUCTOR TERMINAL101

FIGURE 37 - RJ45 CONNECTOR.....112

FIGURE 38 - CF CONNECTOR112

FIGURE 39 - BANTAM CONNECTOR112



1 INTRODUCTION

Thank you for choosing DLS TestWorks.

DLS TestWorks has been in the wireline and noise simulation business for over 20 years now. Since the days of the S2, DLS TestWorks has designed many new units both to customers specifications and to conform to an ever-growing range of standards. By introducing the DLS 100 in 1985 we believe that we sold the world's first truly wideband wireline simulator to successfully simulate attenuation, characteristic impedance and delay.

The NSA 400 is the stand-alone version of the latest noise generator that may also be found in a DLS 400 or DLS 400E.

1.1 About the NSA 400 ADSL Noise Generator

The NSA 400 allows the user to add a wide variety of impairments to the signals at one end of the line, and to test telecommunications transmission systems according to specifications recommended by both European (ETSI) and North American (ANSI) and International (ITU-T) standards bodies. It is particularly suitable for testing Asymmetrical Digital Subscriber Loop (ADSL) transmission products, but can be used to test many other digital transmission products as well.

With downloadable shapes, DLS TestWorks now offers the possibility of easily adding more crosstalk noise shapes as standards change. Impairment files will be stored on disk, and users may load these files into their noise and impairment module using Windows 95 software. New impairments are added simply by reading them into the NSA or DLS 400 as a new file.

The NSA 400 is the perfect companion for the DLS 50 or DLS 90, but can also be used with real cable.

The NSA 400 unit is controlled by software running on any Windows 95 computer. It includes both IEEE 488 and RS-232 interfaces for easy integration into a larger test system.



1.2 About this Manual

This manual contains a “Quick Start” section (see page 3) which lets experienced users get “up-and-running” quickly. First time users should read the “Getting Started” section on page 4 thoroughly before powering up the NSA 400. The remainder of the manual contains information about the software, the remote controls, warranty, specifications and performance.

If you have any questions after reading this manual, please contact your DLS TestWorks sales representative or our Ottawa Customer Service department at the locations listed in section 13, “WARRANTY” of this manual.

2 QUICK START

This section is for experienced users. If you are using the NSA 400 for the first time, please read section 3, “Getting Started”.

- 1) Connect the power cord to the NSA 400 and switch the power ON.
- 2) Connect either the IEEE 488 or the RS-232 cable between your PC and the NSA 400.
- 3) Connect the NSA 400 noise output using the bantam, RJ-45 or 3-pin CF connectors at the back of the unit to your equipment under test.
- 4) Start the software DLS&NSA.EXE.
- 5) Select NSA 400, and choose IEEE or RS-232 control.
- 6) Select the desired impairments combination.
- 7) Do your testing.



3 Getting Started

3.1 Receiving and Unpacking the Unit

The NSA 400 has been shipped to you in a reinforced shipping container. Retain this container for any future shipments.

Check that you received all the items as per the packing list and report any discrepancies as soon as possible.

3.2 What You Need

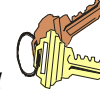
To control the NSA 400, you'll need the following:

- 1) NSA 400 Impairments Simulator
- 2) DLS&NSA software package
- 3) Windows 95 compatible computer with either:

National Instruments GPIB-PCII Interface card
IEEE 488 cable

OR

Serial port (COM1-COM4)
RS-232 serial cable



3.3 NSA 400 Front Panel

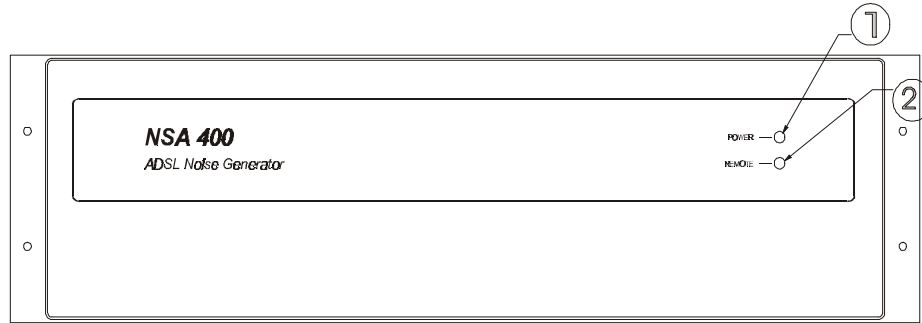


Figure 1 - NSA 400 Front Panel

The NSA 400 has 2 LEDs which indicate the power status and the remote status.

- 1) Power LED
- 2) Remote LED

The POWER LED turns green when the power is turned on. Exceptionally, the power LED will turn blinking red if it fails its self-test, or yellow if it detects an internal error.

The REMOTE LED is off after a power-up or a reset. When the NSA 400 receives the first remote message, the REMOTE LED will turn green if the command is valid or will turn red if an error is detected. The error may be, for example, an invalid command or an out-of-range value. The REMOTE LED will stay red until the error flags are cleared (see the command *ESR? in section 9.1.2 for more details). When the REMOTE LED is red, the NSA 400 can still communicate as normal, but the user should investigate why the error occurred. Sections 6.2.2 and 6.3.2 show examples of programs that will read the ESR register, clear the error flags and will make the REMOTE LED to turn back to green.



3.3.1 NSA 400 Rear Panel

The NSA 400 rear panel consists of the AC input module, digital connectors and analog connectors.

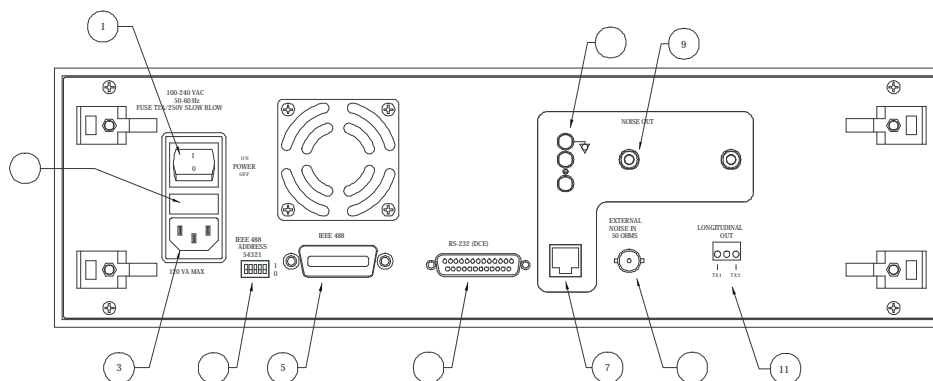
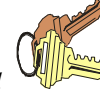


Figure 2 - NSA 400 Rear Panel

- 1) Power On / Off switch
- 2) Fuse box
- 3) Power input
- 4) IEEE 488 address DIP switch
- 5) IEEE 488 connector
- 6) RS-232 (DCE) serial connector
- 7) Differential noise output (RJ-45 connector)
- 8) Differential noise output (CF connector)
- 9) Differential noise output (bantam jack)
- 10) External noise input (BNC connector)
- 11) Longitudinal noise output

3.4 Connecting Power to the NSA 400

DLS TestWorks ships the NSA 400 with a 2-fuse configuration., see section 10, “Fuse Configuration”.



Connect the power input on the back of the NSA 260 V_{RMS} , 50 to 60 Hz. The NSA 400 can work with any voltage and frequency in this range, so you don't have to set any switches. The voltage selector on the rear panel has no effect.

The NSA 400 will always power-up in an "idle" state which means that it will not inject any impairments.

3.4.1 Remote Control

The NSA 400 works with either an IEEE 488 or an RS-232 interface. DLS TestWorks provides control software that let you set the various impairments. If you are developing your own software, read section 6, "REMOTE CONTROL", which explains the different commands to set the unit.

3.4.2 IEEE 488 Operation

The control software supplied by DLS TestWorks will only work with a National Instruments GPIB-PCII interface card. If necessary, install the interface card in the computer.

Connect one end of an IEEE 488 cable to the IEEE 488 connector located on the back panel of the NSA 400. Connect the other end of the IEEE 488 connector to the IEEE 488 interface card in the computer.

3.4.3 Serial Port Operation

Connect one end of an RS-232 serial cable to the RS-232 connector located on the back panel of the NSA 400. Connect the other end to a serial port connector on the computer. The NSA 400 software works with either COM1 or COM2 or COM3 or COM4. Make sure there is no conflict with your mouse!

3.5 Analog connections

3.5.1 Differential Noise Output

The differential noise output is available on three types of connectors located on the rear panel of the NSA 400: RJ-45, bantam and CF. They are all wired in parallel which makes it easy to insert the noise generator on a real circuit - simply use two connectors!



The RJ-45 connector is a 8-pin connector. Only the middle pair (pin 4 and 5) are used.

The CF European-type connector is a 3-pin (ring, tip, ground) connector. It is possible to use banana plugs instead of the CF connector, but note that the distance between the pins is not the usual 0.75" spacing used in North America.

The two bantam connector on the NSA 400 is a 3-wire (ring, tip, sleeve) balanced connector with a diameter of 0.173" (4.39mm). The connector is also known under other names: miniature telephone connector, mini 310 connector, bantam telco jack, etc.

3.5.2 Longitudinal Noise Output

The longitudinal output is being used to drive an external transformer. See section 5.4.7.2 on page 42 for more details about this impairment and the transformer hook-up.

3.5.3 External Noise Input

You can inject externally-generated impairments using the "EXT NOISE IN" BNC connector on the back of the NSA 400. This 50 ohms input is NOT differential - the outside of the BNC connector is grounded.

The frequency bandwidth goes from 50 Hz to 2.0 MHz at all levels up to -30 dBm and from 1kHz to 2.0 MHz at levels up to -10 dBm. A 20 dB attenuator is inserted between the input and the differential output.



4 NSA 400 SOFTWARE

4.1 Software Installation

Operation with an IEEE 488 interface requires installation of a National Instruments GPIB card and GPIB software. The GPIB software must be installed **before** the installation of the DLS&NSA400 software.

If you are using a RS-232 interface, the NI card and drivers are not required.

If you already have the National Instruments card installed and working, or are using only a RS-232 interface, proceed to section 4.1.4 for information on installing the DLS&NSA 400 software. Otherwise, follow the instructions below on installing the NI card and drivers.

4.1.1 To Install National Instruments GPIB Software (IEEE 488 operation only)

1. From the Windows 95 Start Menu select “Settings” >> “Control Panel.”
2. In the control panel, select “Add/Remove Programs”.
3. Click on the “Install” button, and then “Next”.
4. Insert the first installation disk of the GPIB Software for Windows 95 (NI-488.2M software) in drive A, and select “Next”, then “Finish”.
5. The National Instruments GPIB setup will begin, and a “GPIB Setting Options” screen will appear. Select the first option (Install NI-488.2M Software for Windows 95), and follow the instructions to install the software.

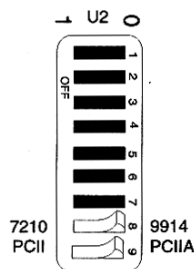


4.1.2 To Install the GPIB-PCII/IIA Card (IEEE 488 operation only)

1. From the Windows 95 Start Menu choose “Settings >> “Control Panel, followed by “Add New Hardware”. Click on the “Next” button to start the process. At this point, Windows will ask if it should search for your new hardware, choose “No” and click on “Next”.
2. A hardware list will appear, choose “Other Devices” (towards the bottom of the list), and click on “Next”.
3. Choose National Instruments, and the appropriate card (GPIB PC-II) and click on “Next”.
4. Windows will show some arbitrary card settings for IRQ, DMA, and Input/Output Range settings. Click on “Next” to accept these settings, and then select “Finish” on the following screen.
5. Answer “No” when asked if you wish to re-start your computer.
6. From the Start Menu, select “Settings” >> “Control Panel” >> “System”. Select the GPIB-PCII under Device Manager by clicking on the icon.
7. Click on “Resources” to view the resource settings. Write down the resource settings.
8. Re-start your computer.
9. Prepare your GPIB-PCII/IIA card for installation by configuring it for GPIB-PCII mode and 7210 mode (the default setting).

Key

■ = not used to select the GPIB-PC or 7210/9914 mode





10. The manufacturer's default resource settings for GPIB-PCII mode are:

Base I/O Address	02B8-02BF
Direct Memory Access:	DMA Channel 1
Interrupt Level:	IRQ 7

Compare the above settings with the settings you wrote down in step #7. If the settings are the same, you do not need to do anything to the card, but can simply insert the card into the computer slot. If the settings are different, you must move the GPIB-PCII/IIA card's jumper and switches to match the resource settings assigned by Windows 95 before installing the card. For details, see the National Instruments book "Getting Started with your GPIB-PCII/IIA and the GPIB Software for Windows 95", chapter 2. This book comes with your National Instruments card.

4.1.3 How to Check if the NI card is installed properly

Check that the PC-II card is installed correctly by running the hardware diagnostic program. From the Windows 95 Start Menu, select "Programs" >> "NI-488.2M Software for Windows 95" >> "Diagnostic". Click on "Test All". If the diagnostic fails, or can't find your GPIB card, make sure that the settings on the card match those specified in the Device Manager. If the diagnostic is successful, click "Exit" to return to Windows 95.

4.1.4 Configuring Windows / National Instruments GPIB card:

This instruction assumes that you have already installed your National Instruments IEEE-488 interface card and associated drivers for Windows. If you are not sure how to do either, please consult your manual that came with your National Instruments card. This document deals with issues that are particular to using DLS TestWorks equipment with the National Instruments IEEE-488 interface card.

Select "Start" > "Settings" > "Control Panel". Double click on "System", and click on the "Device Manager" tab:



Double click on National Instruments GPIB Interfaces, then select the appropriate card. Click the Resources tab, and check each parameter to ensure there are no conflicts. Note that the example shown is for a GPIB-TNT+ card. For GPIB-PCII the address defaults to 02B8h (unless DIP switches are changed), and IRQ 7 and DMA 1 are set by jumpers.

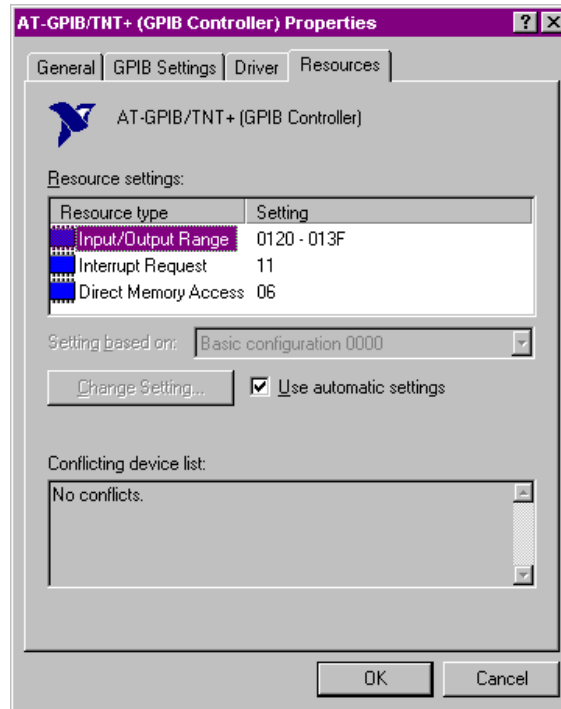


Figure 3 - AT-GPIB/TNT + (GPIB Controller) Properties Window



Choose GPIB settings tab:

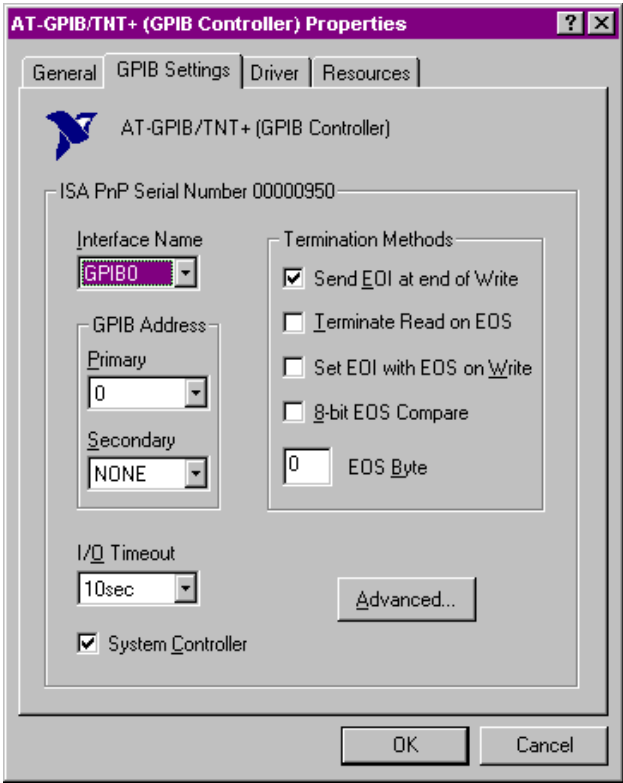
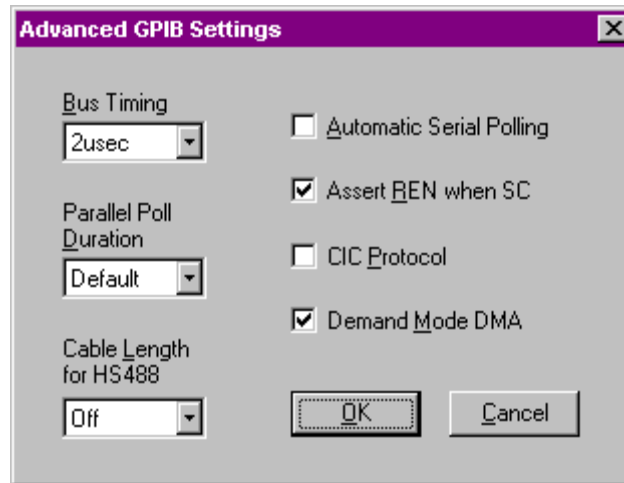


Figure 4 – GPIB Settings Tab



Click Advanced:

Set as follows:



Ensure that the Automatic Serial Polling selection is turned OFF. Otherwise you will experience erratic and unreliable behaviour when communicating with your equipment using the IEEE-488 bus.

Press “OK” for all screens , then exit the Control Panel.

At this point you should be able to control your DLS Testworks equipment using the National Instruments IEEE 488 interface.

4.1.5 To Install the DLS&NSA400 Software

1. Ensure that GPIB Software is installed. (See section 4.1.1 for details)
2. Run “SETUP.EXE” from installation disk one, and follow the instructions on the screen.



4.2 Operating Two or More Units, From the 400 Series, Concurrently

You may operate two or more units, from the 400 series (DLS 400A, DLS 400E, and NSA 400), at the same time over the IEEE bus. Each unit must be launched by its own session of the control software however, and each unit must have a unique IEEE address.

- 1) Create a new software folder for each additional unit you want to control.
- 2) Copy the folder containing the DLS&NSA400 software, including all sub-directories, to the new folder.
- 3) Rename the .exe file in the new folder.
- 4) Ensure that the each unit has a unique IEEE address.

4.3 Main Screen

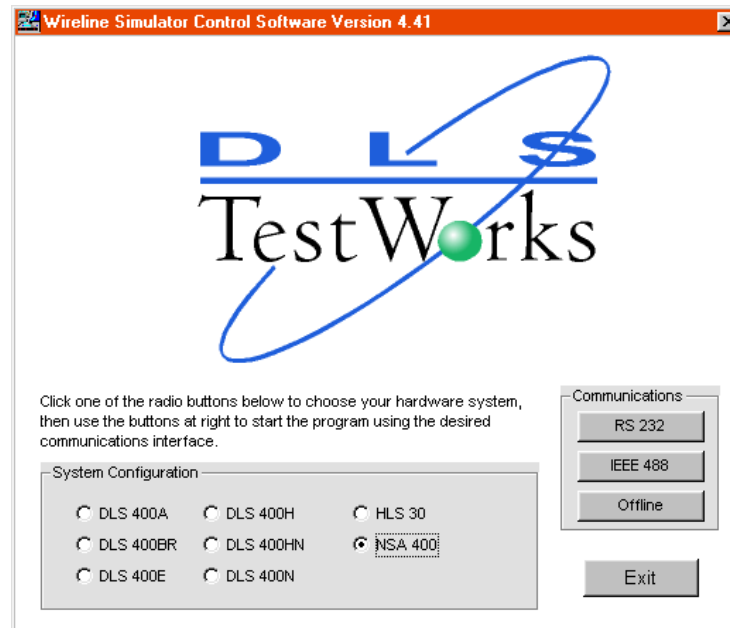


Figure 5 - Main Screen



The NSA 400 software lets you use either the IEEE 488 or the RS-232 to send commands and settings to the unit. You can run the software without a NSA 400 connected, by selecting the offline mode. This mode allows you to explore the software without requiring any hardware.

4.4 Unit Configuration

To set the IEEE 488 address for your unit, select “Unit Configuration” from the Options menu. This setting will be saved upon exiting the software, so you need not set it each time.

Note: The selected number should match the DIP switch settings on the NSA rear panel.

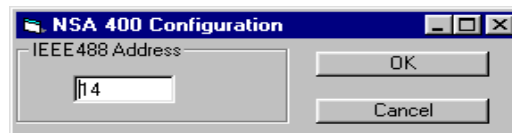


Figure 6 - NSA 400 Configuration

4.5 Editing Impairments Screen

The Editing Impairments screen shows only the parameters of the selected combination. To see all available parameters, select “Load Impairments from Standard” from the File menu, and load “All Impairments Combinations”.

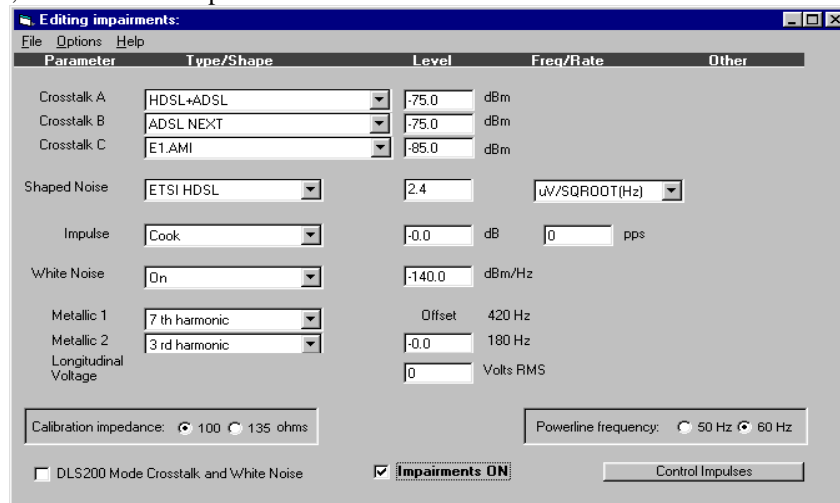


Figure 7 - Editing Impairments Screen



Name	Description
Parameter	<p>The following parameters are available:</p> <ul style="list-style-type: none"> • Crosstalk noise generators (A, B, C) • Shaped Noise • Impulse • White Noise • Metallic 1 • Metallic 2 • Longitudinal
Type/Shape	<p>Select the type for the chosen parameter from the pull-down list.</p> <p>NOTE: For the downloadable shapes files, placing your cursor over this field will bring up a callout which provides the shape name, description, the standard, and the range.</p>
Level	Set the level of the parameter. Placing the cursor over this field bring up a callout which tells you the minimum and maximum value that you may enter. This field will not allow you to set a value that is out of range.
Freq/Rate	Set as required.
Other	Set as required.
Calibration Impedance	Shows the impedance used to calculate dBm power levels. Note that when this value is changed, the absolute power of the signal being injected is not changed, but rather its dBm reading is changed.
Powerline Frequency	Select between 50 or 60 Hz.
Impairments ON	This must be selected in order to apply your settings to the line.
DLS 200 Mode	Select this mode in order to achieve results comparable to those obtained with a DLS 200 unit.
Control Impulses	Click here to bring up the impulse control screen.



4.6 Standard Settings

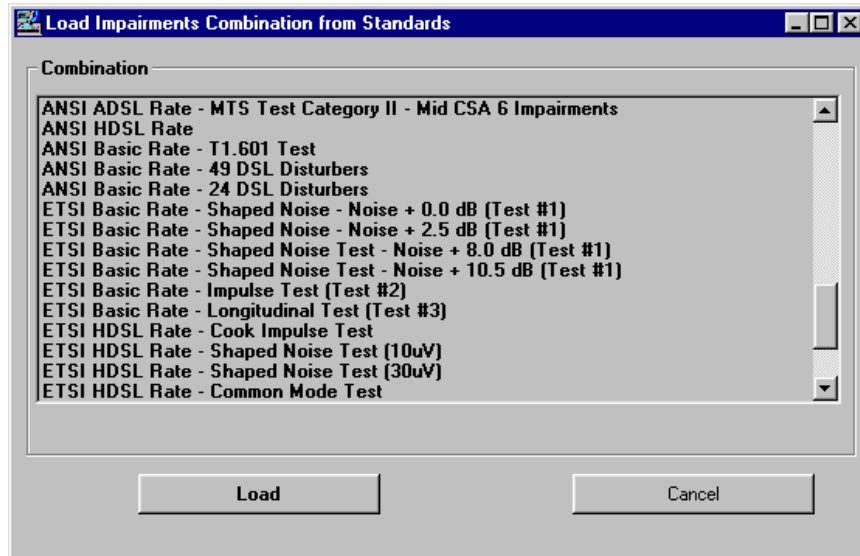


Figure 8 – Load Impairments Combination from Standards

There are over 50 combinations of impairments available, which allows setting the NSA 400 impairment parameters to perform testing according to a variety of North American and European standards:

- ANSI ADSL Rate
- ANSI HDSL Rate
- ANSI Basic Rate
- ETSI ADSL Rate
- ETSI HDSL Rate
- ETSI Basic Rate
- FTZ Basic Rate



4.7 Impulse Control

The Impulse Control feature will generate a total of 15 impulses at an interval of 1.1 seconds. To use the Impulse Control feature, you must select a type, level and width (if applicable) in the Editing Impairments Screen. The pps (pulse per second) value however, must be set to zero.

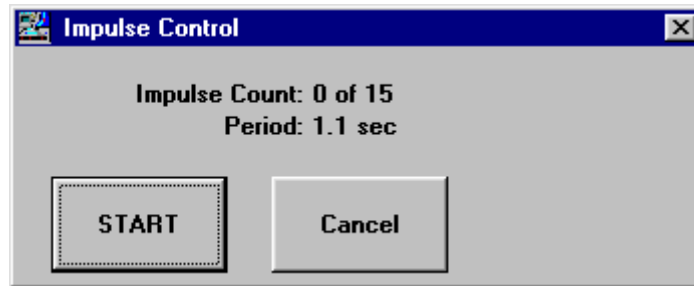


Figure 9 - Impulse Control Screen



5 NSA 400 ADSL NOISE GENERATOR DESCRIPTION

Delivering high-speed data, voice, and video to a subscribers' site over a single pair of wires requires a large bandwidth for transmission, coupled with complex algorithms of compression, error correction, and echo cancellation. The NSA 400 provides a perfect test bed for optimizing these algorithms. Due to the variety of impairments provided by the NSA 400, it is suitable for testing ADSL, HDSL, T1 and ISDN (BRI&PRI) transmission products. The NSA 400 is equally suited for testing transmission schemes which use DMT, CAP, 2B1Q, and any other line codes.

The NSA 400 software provides built-in combination which can be used for testing, ISDN Basic Rate, HDSL rate or ADSL rate transmission equipment to European or North American standards.

The devices under test are connected to the NSA 400 using either the Bantam, RJ-45 or 3-pin CF connectors, located at the back of the unit. All connectors are connected in parallel.

The unit can be controlled via the IEEE 488 and the RS-232 serial interfaces. Commands are following the IEEE 488.2 and SCPI standards.



5.1 Impairment Generators

The NSA 400 contains several generators that can simulate various impairments. The following block diagram shows these generators:

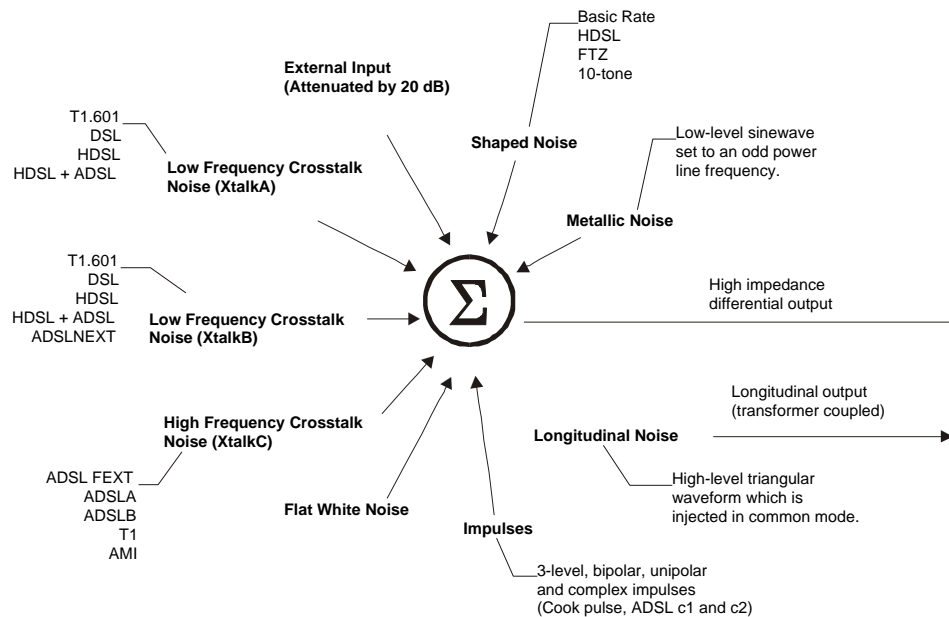


Figure 10 - Impairment Generators Block Diagram



5.2 Downloadable Shapes

With downloadable shapes, DLS TestWorks offers the possibility of easily adding more crosstalk noise shapes. Impairment files will be stored on disk, and users may load these files into their noise and impairment module using Windows 95 software. New impairments are added simply by reading them into the NSA or DLS 400 as a new file.

5.3 Standards Implementation

Most impairments generated are specified by ANSI's T1.E1 committee setting standards for ISDN Basic Rate, HDSL rate and ADSL rate testing of transmission devices. Some of the impairments are specified by the ETSI committee that sets standards for the same set of transmission device tests in Europe. When grouped by the relevant standards, the impairments are as follows:

5.3.1 Basic Rate Testing, ANSI T1.E1 T1.601 standard

Impairment	Description
Longitudinal Noise	Up to 60 volts common mode injection at side B, 60 Hz (option 50 Hz).
Power related Metallic Noise	Odd harmonics of the fundamental up to 11 th harmonic.
Crosstalk Noise (NEXT)	Spectrum and level as specified by ANSI for basic rate DSL 2B1Q transmission.

5.3.2 HDSL Rate Testing, ANSI Technical Report on HDSL

Impairment	Description
Crosstalk Noise (NEXT)	Spectrum and level as specified by ANSI for HDSL rate DSL 2B1Q transmission.
Power related Metallic Noise	Odd harmonics of the fundamental up to 11 th harmonic.



5.3.3 HDSL2 Rate Testing, ANSI Proposed Working Draft for HDSL2 Standard (T1E1.4/98-268)

Impairment	Description
Crosstalk Noise (NEXT)	Spectrum and level as specified by ANSI for HDSL2 rate transmission.

5.3.4 ADSL Rate Testing, ANSI T1.413, Issue I and II

Impairment	Description
Impulse Noise	Both c1 and c2 types of impulses, as specified.
Crosstalk Noise	Different types of crosstalk noise, which can be injected over varying levels and in combination. There are 3 different and independent crosstalk generators. The output level of each one is variable. They can be mixed together to form a wide variety of crosstalk combinations.

5.3.5 ADSL Rate Testing, ITU Standard for G. Lite

Impairment	Description
Crosstalk Noise (NEXT)	Spectrum and level as specified by ANSI for ADSL G. Lite rate transmission.

5.3.6 Basic Rate Testing, ETSI TS 102 080 ISDN Standard

Impairment	Description
Shaped Noise	Multiple tones at 160 Hz and harmonics up to 300 kHz, amplitude and phase related as specified.
Impulse Test	A bipolar pulse, of selectable pulse width, rate and level.
Longitudinal Noise	Common mode at 50 Hz (60 Hz option) at up to 20 Volts



5.3.7 HDSL Rate Testing, ETSI ETR 152 HDSL Standard

Impairment	Description
Shaped Noise	Multiple tones at 320 Hz and harmonics up to 1.5 MHz, amplitude and phase related as specified.
Impulse Test	The Cook pulse, of selectable rate and level.
Longitudinal Noise	Common mode at 50 Hz (60 Hz option) at up to 20 Volts

5.3.8 European ADSL rate testing, ETSI ETR 328 ADSL Standard

Impairment	Description
Impulse Noise	Both c1 and c2 types of impulses, as specified.
Crosstalk Tests 1 and 2	Also known as Model A and Model B crosstalk tests.
Maximum stress linearity test	White noise at -140 dBm/Hz from 1 kHz to 2 MHz

5.4 Individual Impairments

A list of all the individual impairments that can be generated is given below. You can use them in one of the preset combination mentioned above. Alternatively you can set them from the “All Impairments” line of the Impairments Control panel. Then you can set one or all of the possible impairments at varying levels, and in any combination. This very powerful mix of impairments can be used to provide a rich variety of test conditions.

Name	Type	Level Range	Description
T1.601	Crosstalk	-75 to -30 dBm	For spectrum, see Figure 11
DSL NEXT	Crosstalk	-75 to -30 dBm	For spectrum, see Figure 12
HDSL NEXT	Crosstalk	-75 to -30 dBm	For spectrum, see Figure 13
HDSL+ADSL	Crosstalk	-75 to -30 dBm	For spectrum, see Figure 14



Name	Type	Level Range	Description
ADSL FEXT	Crosstalk	-85 to -35 dBm	For spectrum, see Figure 22
ADSL A	Crosstalk	-85 to -35 dBm	For spectrum, see Figure 23
ADSL B	Crosstalk	-85 to -35 dBm	For spectrum, see Figure 24
T1 NEXT	Crosstalk	-85 to -35 dBm	For spectrum, see Figure 25
E1.AMI	Crosstalk	-85 to -35 dBm	For spectrum, see Figure 26
ADSL upstream NEXT (T1.413, Issue I and II)	Crosstalk	-30 to -80 dBm	For spectrum, see Figure 15
ADSL upstream FEXT (9 kft 26 AWG)	Crosstalk	-30 to -80 dBm	For spectrum, see Figure 16
ADSL upstream NEXT (ITU G. Lite)	Crosstalk	-30 to -80 dBm	For spectrum, see Figure 19
FDM ADSL downstream FEXT (13,5kft 26 AWG)	Crosstalk	-45 to -95 dBm	For spectrum, see Figure 18
ADSL upstream FEXT (13.5 kft 26 AWG)	Crosstalk	-45 to -95 dBm	For spectrum, see Figure 19
HDLSL2 downstream NEXT (H2TUC)	Crosstalk	-30 to -80 dBm	For spectrum, see Figure 20
HDLSL2 upstream NEXT (H2TUR)	Crosstalk	-30 to -80 dBm	For spectrum, see Figure 21
T1 (AMI) NEXT	Crosstalk	-18 to -68 dBm	For spectrum, see Figure 27



NSA 400 ADSL Noise Generator Description

Name	Type	Level Range	Description
EC ADSL downstream NEXT	Crosstalk	-17 to -67 dBm	For spectrum, see Figure 28
FDM ADSL downstream NEXT	Crosstalk	-17 to -67 dBm	For spectrum, see Figure 29
FDM ADSL downstream FEXT (9kft 26 AWG)	Crosstalk	-40 to -90 dBm	For spectrum, see Figure 18
FDM ADSL downstream NEXT	Crosstalk	-17 to -67 dBm	For spectrum, see Figure 29
ETSI BASIC	Shaped	3.2 to 100 $\mu\text{V}/\sqrt{\text{Hz}}$	ETSI Basic Rate Shaped Noise
ETSI HDSL	Shaped	3.2 to 100 $\mu\text{V}/\text{Hz}$	ETSI HDSL Rate Shaped Noise.
FTZ 1TR 200	Shaped	3.2 to 100 $\mu\text{V}/\text{Hz}$	Basic Rate Shaped Noise to FTZ specs.
Metallic 1		Offset ± 10 dB	Any odd harmonic up to 11 th of 60 Hz (or 50 Hz)
Metallic 2		Offset ± 10 dB	Any odd harmonic up to 11 th of 60 Hz (or 50 Hz)
Longitudinal	Common mode	0-60 V (60 Hz) 0-50 V (50 Hz)	A triangle wave common-mode
White Noise		-140 to -90 dBm/Hz	Flat white noise.



Name	Type	Level Range	Description	Rate	Width
Cook Pulse	Impulse	-20 to +6 dB	Used for HDSL rate testing. See .	0-100 pps or single shot	n/a
ADSL #1 (c1)	Impulse	0-100 mV	Used for ADSL rate testing. See .	0-100 pps or single shot	n/a
ADSL #2 (c2)	Impulse	0-100 mV	Used for ADSL rate testing. See .	0-100 pps or single shot	n/a
Bipolar	Impulse	0-100 mV		0-100 pps or single shot	20-120 us
3-Level	Impulse	0-100 mV		0-100 pps or single shot	20-120 us
Unipolar	Impulse	0-100 mV		0-100 pps or single shot	20-120 us

NOTES

- 1) Level ranges in dBm are on a 100 Ohm dBm scale. They are measures of the total power in the bandwidth DC to 1.5 MHz.
- 2) Metallic noise is specified in T1.601, using a special load, and 135 Ohm dBm scale. The levels are relative to the reference levels of the odd harmonics which are:

Frequency [Hz]	Level [dBm]
60	-47
180	-49
300	-59
420	-65
540	-70
660	-74

- 3) Cook pulse levels are relative to the reference level of 318 mV p-p, when using a 135 Ohm system.
- 4) The level range given for shaped noise is obtained using a 135 Ohm system.



5.4.1 Output Stage

The noise generator can be completely disconnected by a relay from the output jacks even if impairments are still being generated inside the unit. This also removes the very slight loading effect of the impairments card.

NOTE: The output impedance is high, so that the NSA 400 really acts as a current source. For any impairments except longitudinal noise, the level seen on the line depends on the line impedance.

5.4.2 Crosstalk Generators A and B

The impairments card contains two independent low frequency crosstalk generators able to produce a variety of shaped white noises up to 600 kHz. Generator B can produce all of the signals that generator A can produce, as well as some that generator A cannot produce. In addition, generator B is more versatile than generator A.

Reference levels of noise, with dB based on 100 ohms, are

Type	Level [dB]
T1.601	-45.0
10-disturber DSL NEXT	-56.1
10-disturber HDSL NEXT	-47.6
10-disturber ADSL NEXT	-49.9
10-disturber HDSL+ADSL	-45.6
49-disturber ADSL upstream NEXT (ANSI T1.413 Issue I and II)	-43.3
49-disturber ADSL upstream FEXT (9kft 26AWG)	-69.1
49-disturber ADSL upstream NEXT (ITU G. Lite)	-43.3
49-disturber FDM ADSL downstream FEXT (13.5kft 26AWG)	-83.9
49-disturber ADSL upstream FEXT (13.5 kft 26 AWG)	-81.8
49-disturber HDSL2 downstream NEXT (H2TUC)	-33.9
49-disturber HDSL2 upstream NEXT (H2TUR)	-36.6

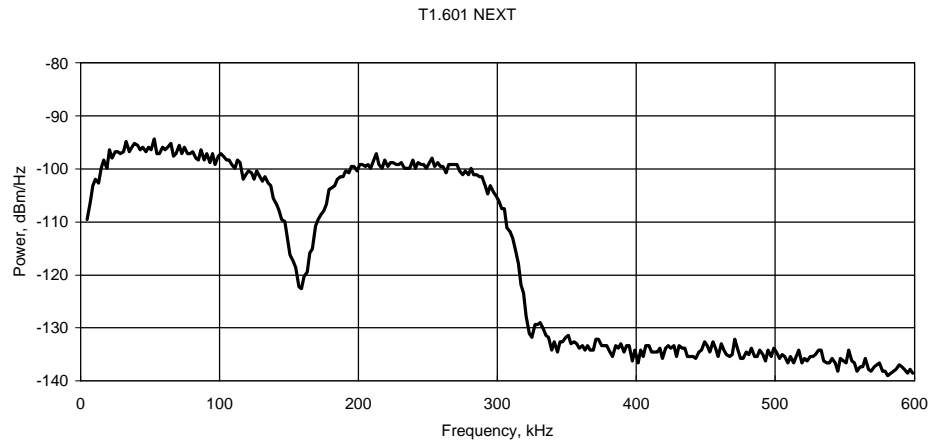


Figure 11 - T1.601 NEXT

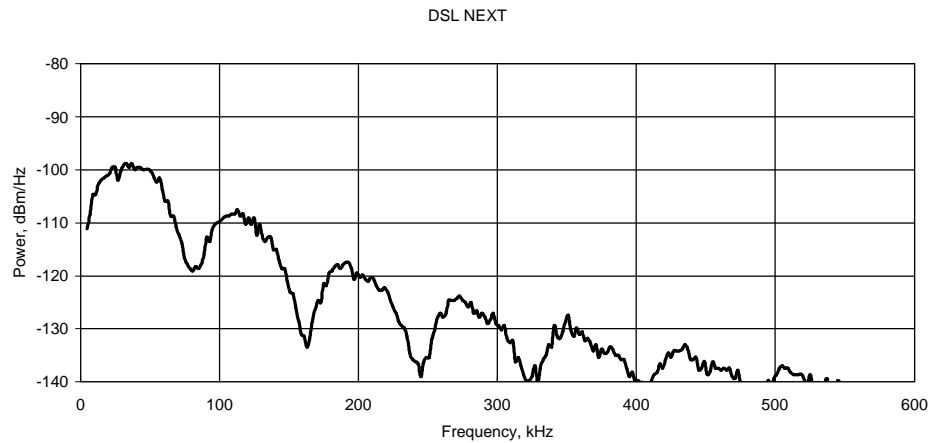


Figure 12 - DSL NEXT

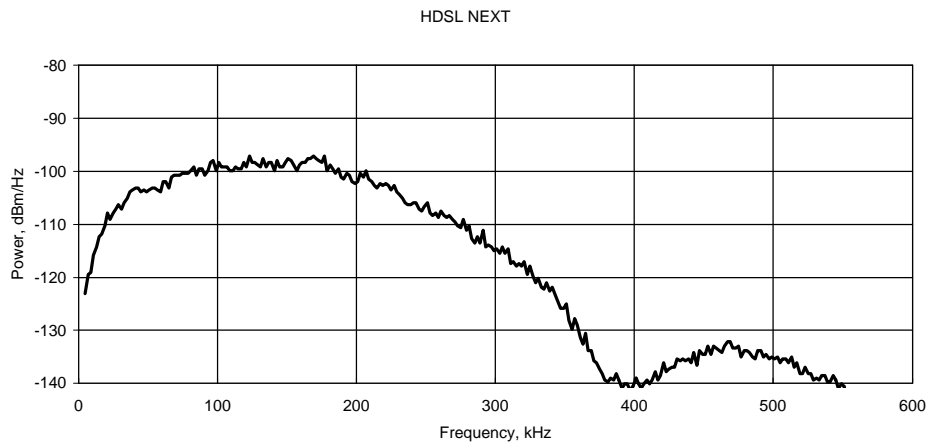


Figure 13 - HDSL NEXT

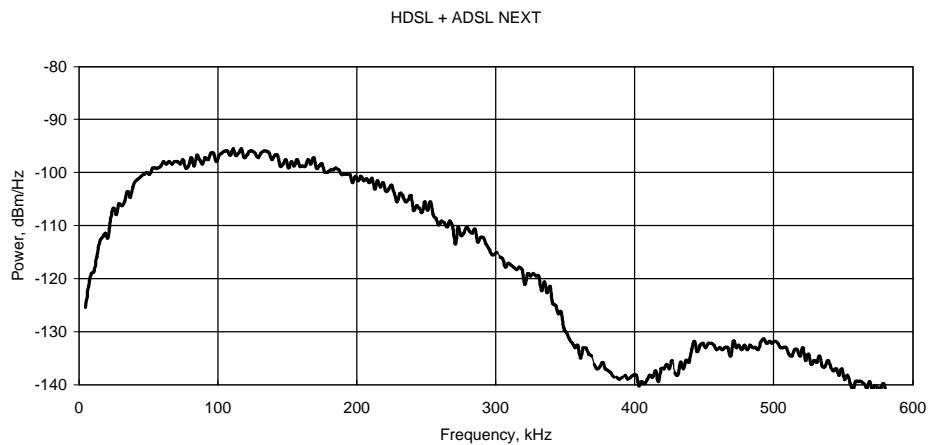


Figure 14 - HDSL + ADSL NEXT

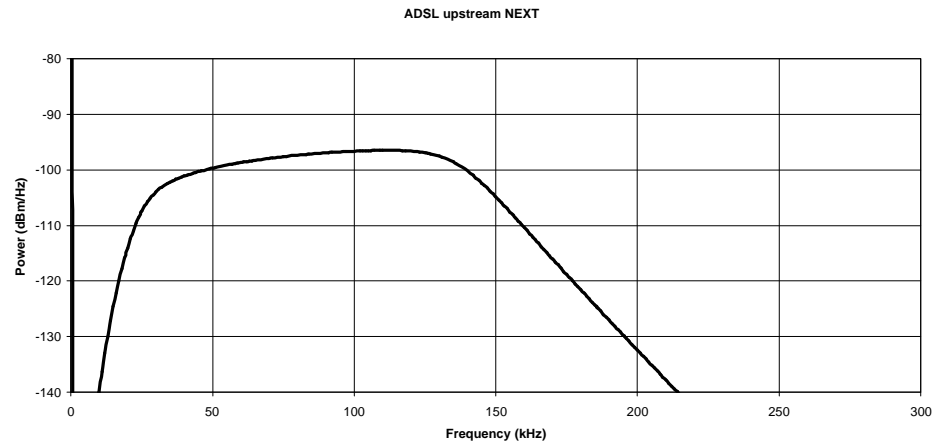


Figure 15 – T1.413 II EC ADSL upstream NEXT

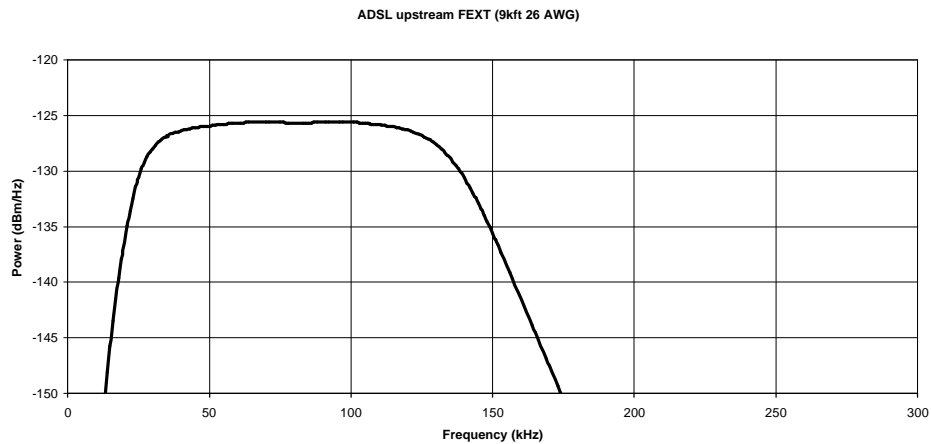
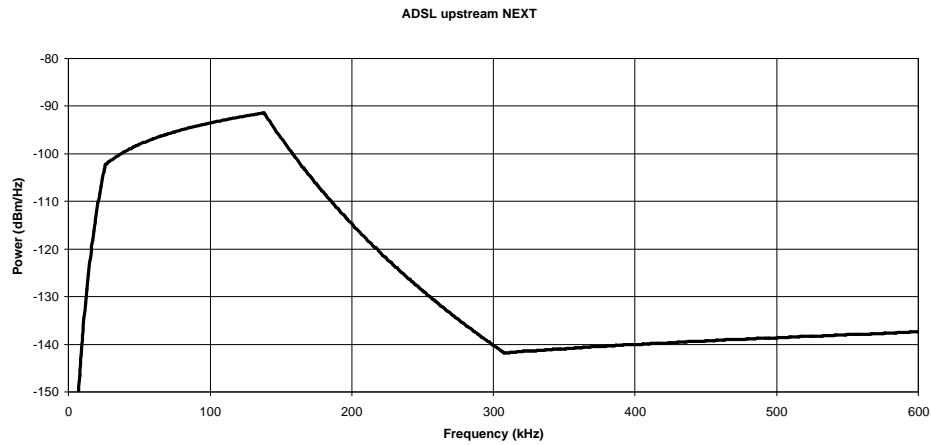


Figure 16 – T1.413 II EC ADSL upstream FEXT (9 kft 26 AWG)



**Figure 17 – T1.413 II FDM ADSL upstream NEXT
ITU-T NA ADSL Upstream NEXT**

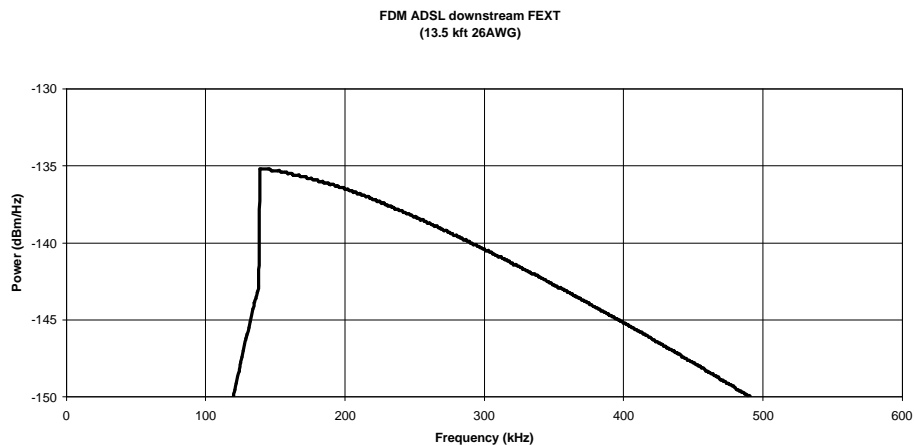


Figure 18 - ITU-T NA FDM ADSL Downstream FEXT

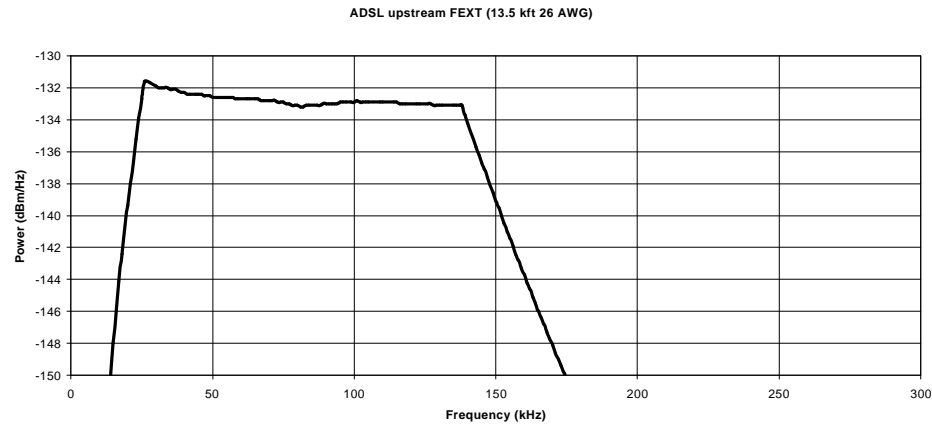


Figure 19 - ITU-T NA ADSL Upstream FEXT

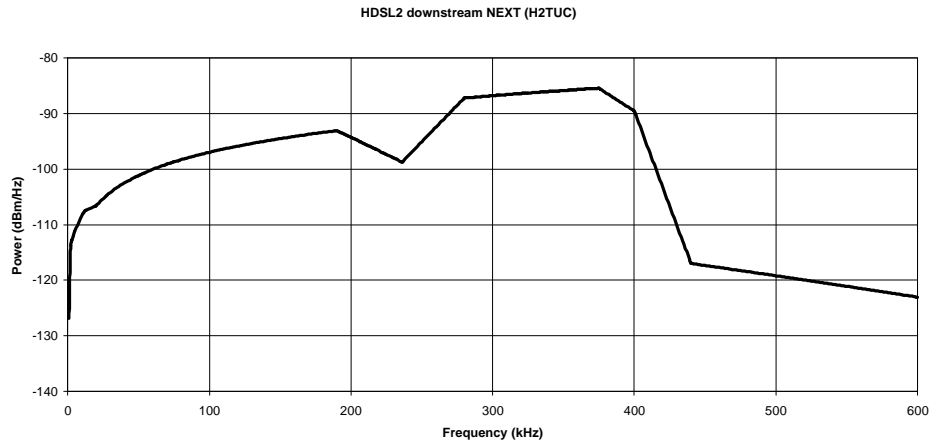


Figure 20 - HDSL2 downstream NEXT (H2TUC)

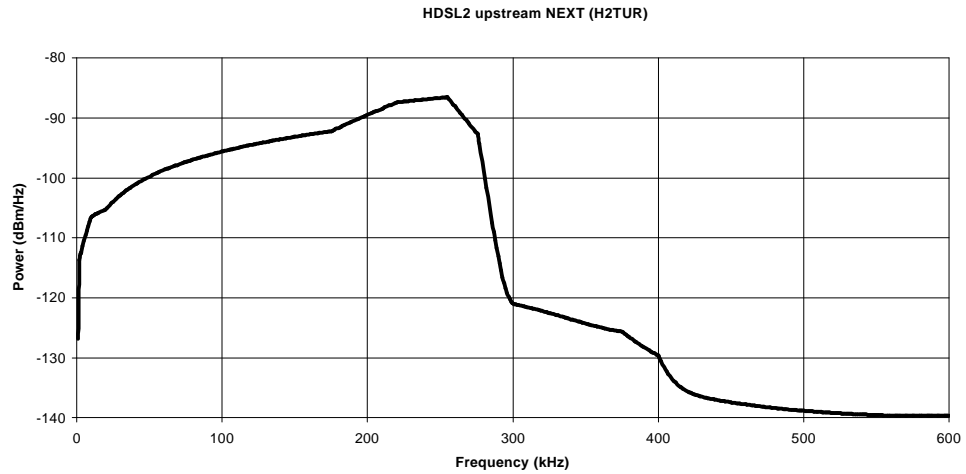


Figure 21 - HDSL2 upstream NEXT (H2TUR)



The difference in levels due to different numbers of interferers are:

Number of disturbers	Level difference [dB]
49	+4.1
24	+2.3
20	+1.8
10	0.0
4	-2.4
1	-6.0

5.4.3 Crosstalk Generator C

The (high frequency) crosstalk generator C produces noise with frequency components up to 2 MHz. Reference levels of noise, with dB based on 100 ohms, are:

Type	Level [dB]
10-disturber ADSL FEXT	-69.6
ADSLA	-49.4
ADSLB	-43.0
10-disturber T1 NEXT	-47.8
10-disturber AMI	-46.0
49-disturber T1 (AMI) NEXT	-43.7
49-disturber EC ADSL downstream NEXT	-25.4
49-disturber FDM ADSL downstream NEXT	-43.5
49-disturber FDM downstream FEXT (9kft 26 AWG)	-70.5
49-disturber FDM ADSL downstream NEXT	-43.5

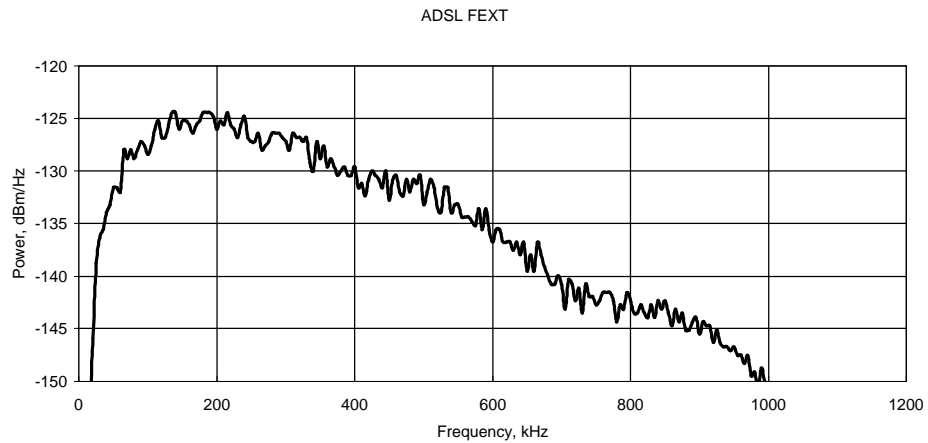


Figure 22 - ADSL FEXT

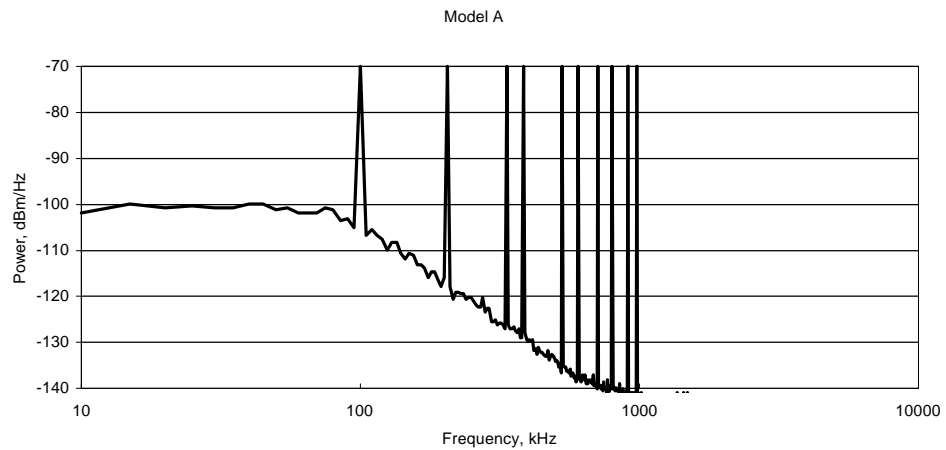


Figure 23 - Model A

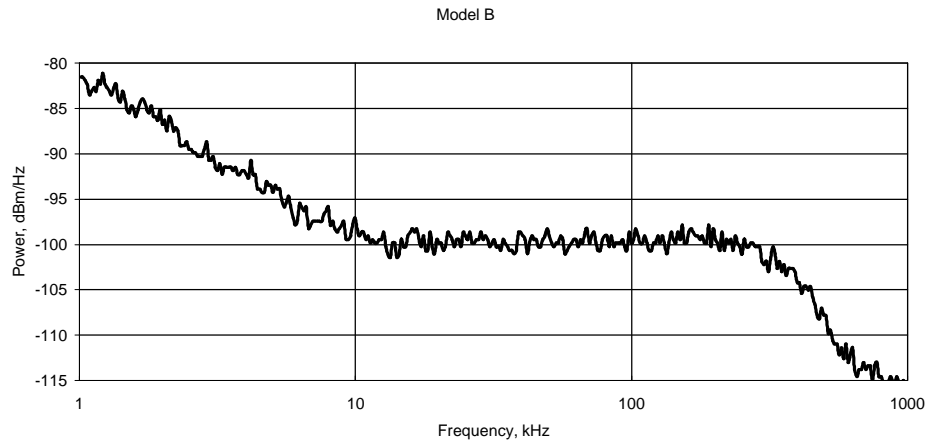


Figure 24 - Model B

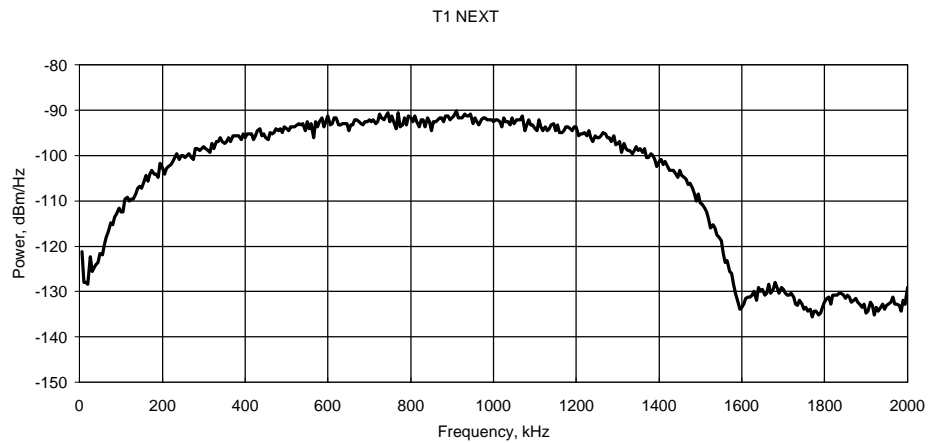


Figure 25 - T1 NEXT

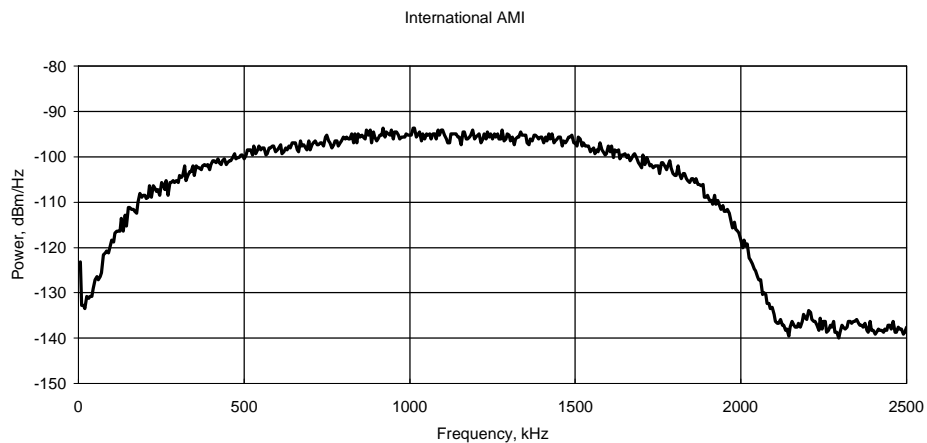
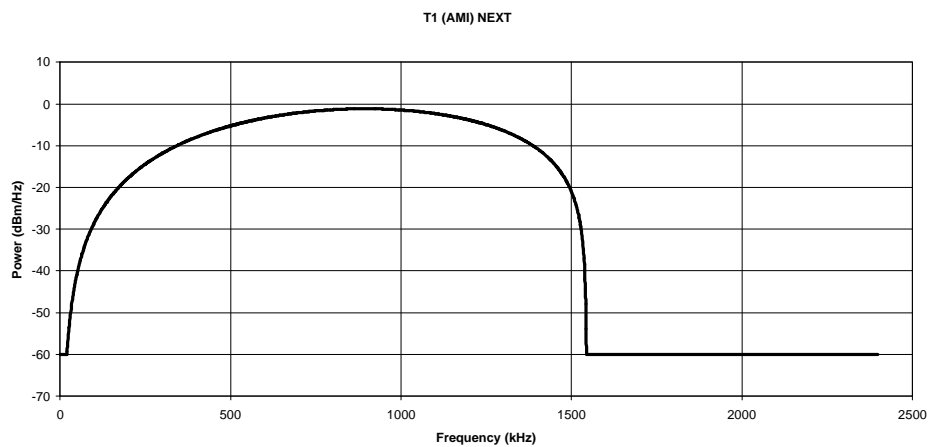
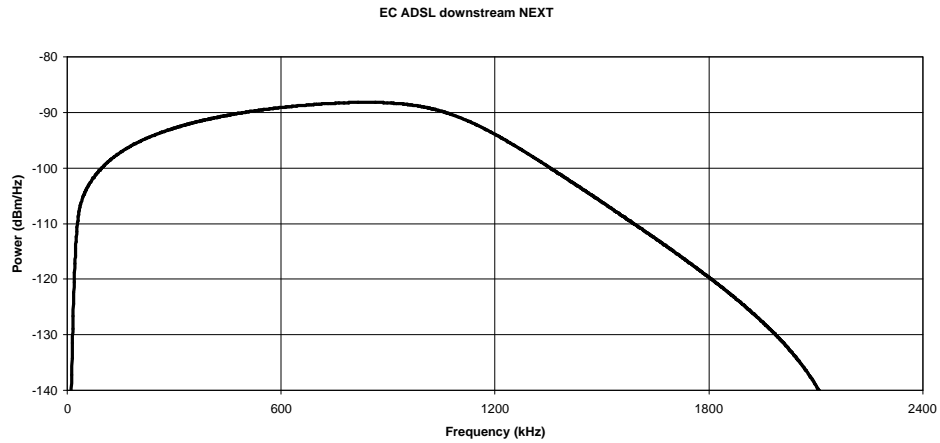


Figure 26 - International AMI



**Figure 27 - T1. 413 II T1 (AMI) NEXT
ITU-T NA T1 (AMI) NEXT
HDSL2 T1 (AMI) NEXT**



**Figure 28 - T1.413 II EC ADSL downstream NEXT
HDSL2 EC ADSL downstream NEXT**

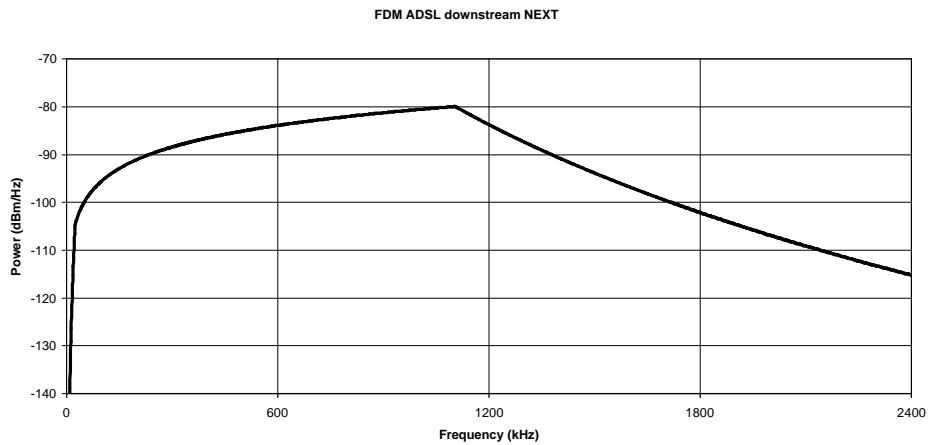


Figure 29 - T1.413 II FDM ADSL downstream NEXT

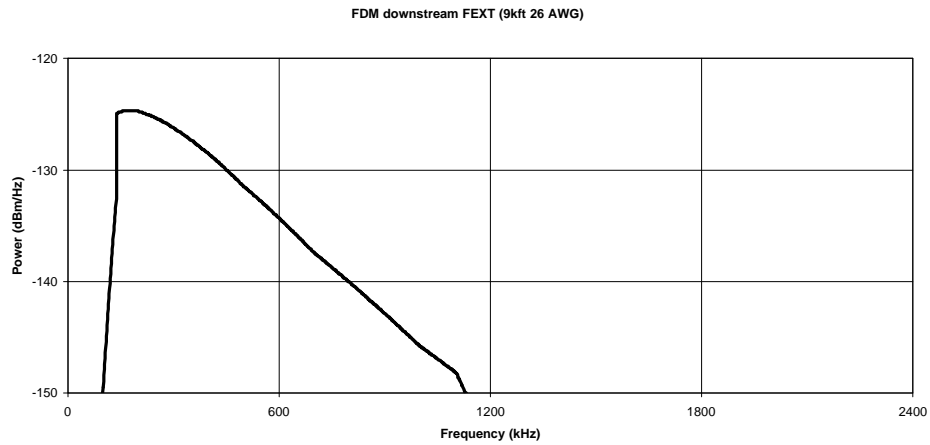
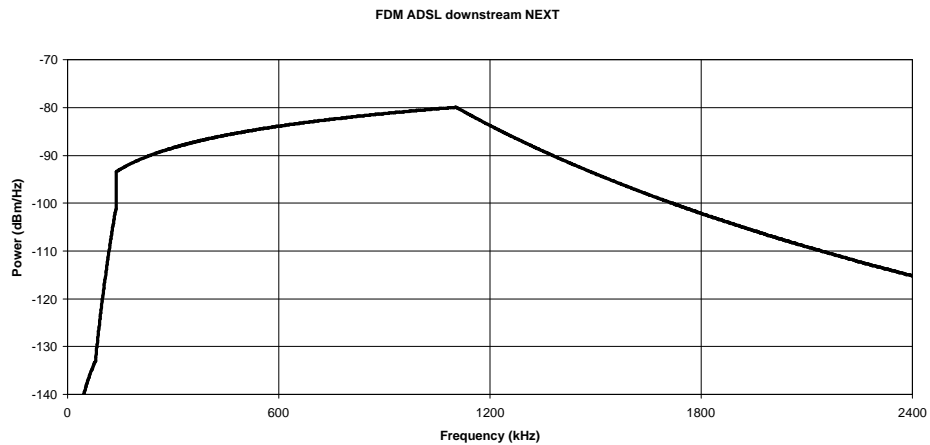


Figure 30 - T1.413 II FDM downstream FEXT (9kft 26 AWG)



**Figure 31 - ITU-T NA FDM ADSL downstream NEXT
HDSL2 FDM ADSL downstream NEXT**



5.4.4 Shaped Noise Generator

The shaped noise generator is a RAM-based generator which produces a variety of discrete tones:

- ◆ ETSI Basic Rate
- ◆ ETSI HDSLRate
- ◆ to FTZ TR.220 recommendations

It is also used to generate the 10 tones which are needed for ADSL Model A noise.

5.4.5 Flat White Noise Generator

The flat noise generator injects a flat white noise signal, with a -3 dB point located at 2 MHz.

5.4.6 Impulse Generator

Seven different type of impulses may be selected. They are: 3-level, bipolar, unipolar+, unipolar-, cook, ADSL c1, ADSL c2.

Four of them (3-level/bipolar/unipolar+/unipolar-) consist only of either 2 or 3 different levels. These type of impulses are calibrated in mV peak-to-peak. The pulse width, variable from 20 to 120 micro-seconds is only enabled when one of these type is selected.

The other three types, Cook, ADSL c1 & c2, are complex waveforms as shown in the diagrams below. Impulse rate can also be a single, “triggered” impulse or varied from 0 to 100 per second.

5.4.7 Powerline Related Impairments

Two types of impairments are generated by the ADSL noise generator due to the interference from AC power lines. One of them is called “metallic” and the other one “longitudinal”.

The reference powerline frequency used in both cases can be selected as 50 or 60 Hz.



5.4.7.1 Metallic Noise

Powerline metallic noise is a pair of low-level sine waves which are injected in differential mode. The frequency of the sinewaves can be set to any odd harmonic, from the fundamental up to the 11th odd harmonic (550 or 660 Hz). The ADSL noise generator

contains two generators that can be set independently. The generator will automatically disable the second tone generator if both frequencies are set equal. The relative levels of the harmonics are always the same. The levels of both tones taken together can be varied over ± 10 dB relative to the ANSI reference levels.

The ANSI reference levels are shown in the following table:

Harmonic	Frequency [Hz]	Level [dBm]
1 st	60 / 50	-47
3 rd	180 / 150	-49
5 th	300 / 250	-59
7 th	420 / 350	-65
9 th	540 / 450	-70
11 th	660 / 550	-74

5.4.7.2 Longitudinal Noise

Longitudinal noise is a triangular waveform which is injected in common mode on the wireline using a transformer. Associated with the longitudinal noise, some longitudinal loads should also be used. The ETSI TS 102 080 ISDN Standard (formerly ETR80) requires that both pairs of loads (located on both sides of the transformer) are set any time the longitudinal voltage is generated (max voltage is $25 V_{RMS}$). Otherwise only ONE pair is installed.

When one load is installed, it should be at the CO side, where no longitudinal voltage will appear. The level of longitudinal noise which appears at the customer site end of the line is 0 to $50 V_{RMS}$ in 1V steps when the powerline frequency is 50 Hz, and 0 to 60 V when the powerline frequency is 60 Hz.

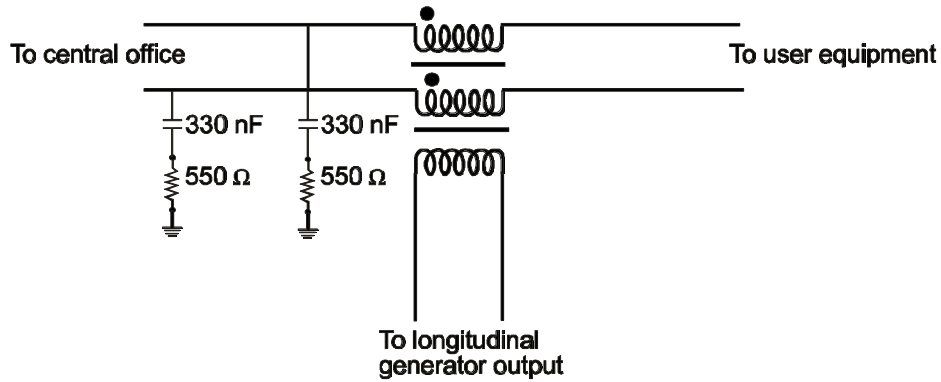


Figure 32 - ANSI Longitudinal Load Configuration

If both loads are installed, equal and opposite-phase voltages appear at the end of the lines. They are half the voltage that would appear at one end of the line, if only one load is in place.

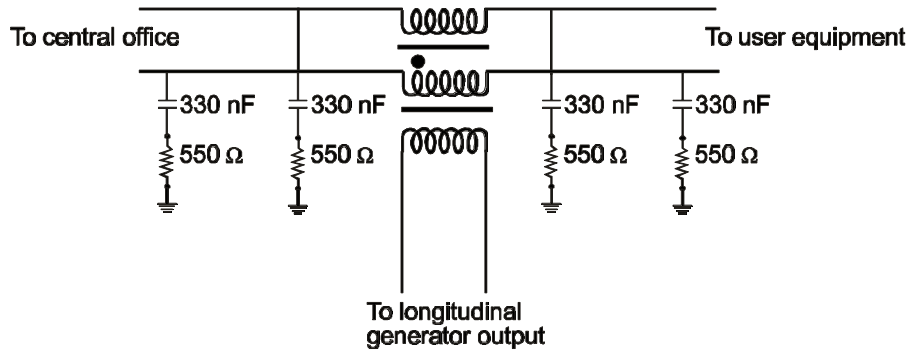


Figure 33 - ETSI Longitudinal Load Configuration



WARNING

Inserting the longitudinal mode transformer in the loop provides additional loop attenuation which is not present when the transformer is switched out of the loop. The effective attenuation depends on the bandwidth of the signal passing through the loop, but is in the region of 1 to 4 dB. This alone accounts for some reduction in margin. When using longitudinal mode you can determine how much reduction in margin is due to the transformer by switching it in circuit, impressing 0 Volts of longitudinal mode voltage on the line, and running a test like this. Then you can run with longitudinal voltage as well, to determine additional degradation due to the longitudinal voltage.

5.4.7.3 DLS 200 Compatible Mode

All 3 crosstalk generators, and the white noise generator are based on noise produced by Pseudo Random Binary Sequences. This base noise is then used to create the appropriate crosstalk and white noises. Some customers, expressed a desire for the noises generated by the DLS 400 to produce exactly the same effects as noises that come from a DLS 200H. To do this we introduced a DLS 200 compatible noise, in which the base noise is modified from the original DLS 400 base noise.



6 REMOTE CONTROL

The NSA 400 is controlled via the IEEE 488 (also known as the GPIB bus), or the RS-232 (serial) interface, allowing the integration of the NSA 400 into a larger test system.

The NSA 400 remote control is designed with several standards in mind:

- ◆ The GPIB physical interface follows IEEE 488.1. The functions implemented are outlined in Section 6.1, “IEEE 488 Interface”.
- ◆ The Common Commands (see section 9) follow IEEE 488.2.
- ◆ The Device Dependent Commands (see section 6.6) are based upon the Standard Commands for Programmable Interfaces (SCPI). However, we had to create some device dependent commands since none of the pre-defined SCPI commands apply to the NSA 400.
- ◆ The serial port physical interface follows the EIA RS-232 standard.

The IEEE 488 and the serial interfaces are always enabled, and can be used alternatively. The NSA 400 directs its output to the last interface from which it received data. Both interfaces use the same command set and produce the same results.

Section 6.1 and 6.3 describe features specific to one particular interface, and the rest of this section describes the commands that are common to both interfaces.

6.1 IEEE 488 Interface

This section contains information specific to the IEEE 488 interface. Section 6.3 contains the information specific to the RS-232 interface.

6.1.1 IEEE 488.1 Interface functions supported

The IEEE 488.1 Interface functions supported by the NSA 400 are as follows:

SH1	Source handshake - full capability
AH1	Acceptor handshake - full capability
T5	Basic talker - serial pol, untalk on MLA
L3	Basic listener - unlisten on MTA
SR1	Service request - full
DC1	Device clear – full



Remote Control

- C4** Respond to SRQ
- E1** Open Collector drivers
- RL1** Remote Local - full

These represent the minimum required to implement the IEEE 488.2 standard.

Note that the IEEE 488 interface is also known as the GPIB and the HP-IB interfaces.

6.1.2 IEEE 488 Address

The NSA 400 can use any valid IEEE 488 address (from 0 to 31). You can change the address by using the DIP switch on the back of the unit. The weighting is as follows:

Dip Switch	Weighting
AD5	16
AD4	8
AD3	4
AD2	2
AD1	1

The following figure shows the default switch setting which is set to address 14 (i.e. $0+8+4+2+0=14$):





6.1.3 The Service Request (SRQ) Line

The SRQ line, as defined by the IEEE 488.1 standard, is raised when the NSA 400 is requesting service. Here are some examples of services that could raise SRQ:

- ◆ a message is available in the output buffer
- ◆ an error occurred
- ◆ all pending operations are completed
- ◆ the power was just turned on

In order to use the SRQ line, all relevant enable bits must be set.

For example:

- ◆ the SRQ line can be raised automatically when there is a message available by enabling the MAV bit (bit 4) in the Status Byte Register with the command *SRE 16.
- ◆ the SRQ line can be raised automatically when there is an error by enabling the ESB bit (bit 5) in the Status Byte Register with *SRE32 and by enabling the error bits in the Standard Event Status Register with *ESE 60 (bit 2, 3, 4 and 5).

NOTE: The Factory default is to clear all enable registers on power up. See *PSC, *ESE and *SRE commands for more details in section 9.

We recommend that you set the NSA 400 to raise the SRQline when there is a message available and when there is an error.

6.2 Resetting the NSA 400

To reset the NSA 400, use the “Device Clear” command as defined in the IEEE 488.1 standard. This has the same effect as the power-up reset.

Shunt JP2 on the controller card determines whether the “Interface Clear” line resets the whole unit or just the IEEE 488 interface. The factory default is to set JP2 in the IFC position (pin 1 and 2) which resets only the interface when IFC is received.

The only tool you need to change the shunt of position is a Phillips screwdriver. This procedure should be read entirely before beginning.



- 1) Turn off the NSA 400 and remove the power cord.
- 2) Remove the 4 screws and washers from the front of the unit. This allows the front panel to be removed.
- 3) Remove the left and right card retainers.
- 4) Remove the control card from the bottom slot.

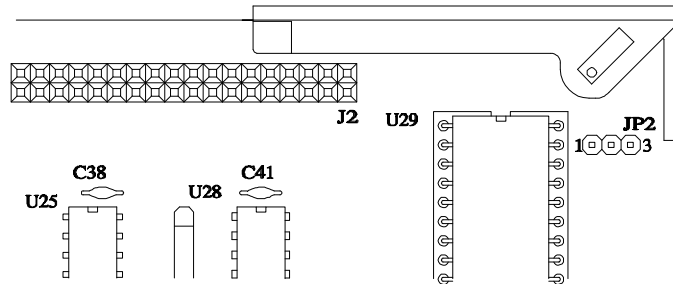


Figure 34 - NSA 400 Controller IFC Strap Option

- 5) Locate JP2 using Figure 34 and install the shunt in the desired location. Setting JP2 in the IFC position (pin 1 and 2) resets only the interface when IFC is received. In the “RESET” position (pin 2 and 3), IFC resets the entire unit.
- 6) Re-install the controller and ensure a tight fit with the connectors on the back plane.
- 7) At this time, plug the unit in and turn it on. Run the software that came with the unit and ensure the program can set the impairments. Turn the unit off and proceed with the procedure.
- 8) Replace the card retainers.
- 9) Replace the front panel and re-install the 4 screws and washers at the front of the unit.
- 10) Plug the unit in and turn it on. Run the software that came with the unit and ensure the program can set the impairments.



6.2.1 Message Terminators

Messages to the NSA 400 must be terminated with either a Line Feed character (ASCII <LF>, decimal 10, hex 0A), an IEEE 488.1 EOI signal or both. Messages from the NSA 400 are always terminated with a Line Feed character and the IEEE 488.1 EOI signal. Note that some languages, such as BASIC, may automatically append a carriage return and a line feed at the end of messages. The carriage return character is not a valid terminator, and will invalidate the last command. To avoid this problem, you can append a semi-colon after a string (after the quotes) when printing to the IEEE 488 port. Another solution is to append a semi-colon at the end of the command itself (inside the quotes), so that the carriage return can be interpreted as a second command, and be simply discarded by the NSA 400. For example:

PRINT #1, “:sourceA:output on”+CHR\$(10); Preferred solution

or

PRINT #1, “:sourceA:output on;” Other solution

6.2.2 Example using the IEEE 488 Interface

To enable the output stage, do the following:

- ◆ transmit “:SOURCEA:OUTPUT ON”
- ◆ check that the REMOTE LED is green

To send and receive messages with error checking follow these steps:

- ◆ set all relevant enable bits (only done once)
- ◆ send the message
- ◆ wait for SRQ
- ◆ read the Status Byte
- ◆ if MAV (bit 4) is set then read the response
- ◆ if ESB (bit 5) is set then read the Standard Event Status Register and take all the relevant actions.



- ◆ transmit “*SRE 48” » enable MAV and ESB (needed only once)
- ◆ transmit “*ESE 60” »enable all the error bits (needed only once)
- ◆ transmit “*IDN?” »query the identification message
- ◆ wait for SRQ to be raised
- ◆ read the status byte »use the IEEE 488.1 serial poll command,
not *STB?

- ◆ if MAV (bit 4) is set read the response
- ◆ if ESB (bit 5) is set do the following »check if an error was detected
- ◆ transmit “*ESR?” »query the Event Status Register
- ◆ wait for SRQ to be raised
- ◆ if MAV (bit 4) is set read the response and take all relevant action according to the
error type received

6.3 RS-232 Serial Interface

The NSA 400 uses a female DB-25 connector, and is configured as a DCE device. It can therefore be connected directly to your PC serial port.

To use the RS-232 interface, simply connect your computer to the NSA 400 and set the computer to 9600 bps baud rate, no parity, 8 data bits per character, 1 stop bit and RTS/CTS hardware flow control.

Do NOT use a null modem with a computer that has a standard COM port configured as a DTE.



The NSA 400 stops transmitting data when the RTS line is low, and restarts when the RTS line is high. The NSA 400 lowers the CTS and the DSR lines when it cannot accept data, and raises them when it can. Note that the RTS line is not the usual “Request To Send” as defined by the RS-232 standard. If desired, the user can leave the RTS line set, and use only the CTS line.

Most serial port communication programs can be used to control the NSA 400. To use HyperTerminal, click on “Start” >> “Programs” >> “Accessories” >> “HyperTerminal” >> “hypertrm.exe”. When the program starts, enter a name (for example; “NSA 400”), select the port, (for example; “Direct to COM1”). Enter the port settings: 9600, 8, none, 1 and hardware. Select “File” >> “Properties” >> “Settings” >> “ASCII Setup”, enable “Send line ends with line feeds” and “Echo typed characters locally”, and finally press “OK” twice. You should now be able to send and receive command to and from the NSA 400.

6.3.1 Message Terminators

Message sent to the NSA 400 through the serial interface **MUST** be terminated with the line feed character (decimal 10, hex 0A, LF). To ensure that no characters are left in the receive buffer of the NSA 400 from a previous incomplete command, you can send the line feed character by itself before sending new commands.

Messages from the NSA 400 are always terminated with a Line Feed character.

Note that some languages, such as BASIC, may automatically append a carriage return and a line feed at the end of messages. The carriage return character is not a valid terminator, and will invalidate the last command. To avoid this problem, you can append a semi-colon after a string (after the quotes) when printing to the IEEE 488 port. Another solution is to append a semi-colon at the end of the command itself (inside the quotes), so that the carriage return can be interpreted as a second command, and be simply discarded by the NSA 400. For example:

PRINT #1, “:sourceA:output on”+CHR\$(10); Preferred solution

or

PRINT #1, “:sourceA:output on;” Other solution

6.3.2 Example using the RS-232 Interface

To enable the output stage, do the following:

- ◆ transmit “:SOURCEA:OUTPUT ON”



- To send and receive messages with error checking follow these steps:

- For example, to get the identification message with the RS-232 interface, do the following:

- ## 6.4 Data formats

This remaining sections applies to both the IEEE 488 and RS-232 interfaces.

The NSA 400 adheres to the IEEE 488.2 principle of Forgiving Listening and Precise Talking.

The data formats supported by the NSA 400 are:

- Talking:** a) <NR1> Numeric Response Data - Integer
b) Arbitrary ASCII Response Data

$\langle \text{NR1} \rangle$ is an implicit point representation of an integer.

Arbitrary ASCII Response Data is a generic character string without any delimiting characters. It is usually used to send data in response to a query, such as with the *IDN? command (see section 9, “Common Command Set”).



Listening: <NRf> Decimal Numeric Program Data

<NRf> is the Flexible Numeric Representation defined in the IEEE.2 standard which can represent just about any number.

The NSA 400 can accept data in the <NRf> format, which means that numbers can be made of a combination of digits, signs, decimal point, exponent, multiplier, unit and spaces. For example, any of the following is a valid representation for -85.0 dBm: -85dbm, -85.0 dbm, -85, -85.0, -8.5e2. If a unit (i.e. dB, pps, mv, etc) is appended to a number, that unit must be valid and not abbreviated. Note that the period separates the decimal part of a number.

6.5 Command Syntax

The NSA 400 adheres to the IEEE 488.2 format for command syntax. As with the Data Format, the principle is forgiving listening and precise talking.

Commands may take one of two forms, either a Common Command or a Device Dependent Command. The format of each is detailed in subsequent sections 9 (common command), 7 (summary commands) and 8 (detailed commands). Each type may be preceded by one or more spaces, and each must have one or more spaces between its mnemonic and the data associated with it.

Common commands are preceded by the character “*”. Device Dependent commands are preceded by a colon, with a colon separating each level of the command. Commands may be either in upper or lower case. Multiple commands may be concatenated by separating each command by semi-colons.

The following are some examples :

***RST**

***RST;*WAI;;SourceA:output off**

***ESE 45; *SRE 16**

IEEE 488 messages to the NSA 400 may be terminated with either a Line Feed character (ASCII <LF>, decimal 10, hex 0A), an IEEE 488 EOI signal or both. RS-232 messages must be terminated with a line feed character. Messages from the NSA 400 are always terminated with a Line Feed character, and also with the EOI signal if using the IEEE 488 interface.



As defined in the SCPI specifications, a Device Dependent Command may be sent in its short form or long form, in upper or lower case. The following commands are therefore identical in operation:

:SOURCEA:IMPULSE:RATE 100 PPS

:SOURCEA:IMPULSE:RATE 100

:SOURCEA:IMPULSE:RAT 100

:SOURCEA:IMP:RAT 100

:SourceA:impulse:rate 100

:SourceA:Impulse:Rate 100 pps

Queries of the system follow the same format as the commands, except that the data normally associated with a command is replaced by a question mark “?”. Following receipt of such a command, the NSA 400 will place the appropriate response in the output queue, where it can be read by the controller.

Examples are:

***IDN?**

***ESE?;*SRE?**

:SOURCEA:IMPULSE:RATE?

When a command does not begin with a colon, the NSA 400 assumes that the command is at the same level as the previous command. For example, to set the impulse, one does NOT need to specify “:SOURCEA:IMPULSE” each time, such as in:

:SOURCEA:IMPULSE:TYPE BIPOLAR;RATE 100;WIDTH 50

6.6 Device Dependent Command Set

As recommended by the SCPI consortium and to simplify programming of the various DLS TestWorks simulators, the NSA 400 uses the following rules:

- ◆ Each section of the command may be sent in the full or the truncated form (indicated in upper case).
- ◆ The command itself may be sent in upper or lower case form.



- ◆ The NSA 400 will round any number to the nearest number permitted by the resolution of the parameter.

Sections 6.4 and 6.5 give more information on the data format and the command syntax.

6.6.1 :SYStem:CALibration:DATE/EXPIry <date>

Set the calibration date or expiry of the NSA 400. For example:

```
:system:calibration:date: <date>  
:system:calibration:expiry: <date>
```

where <date> is any character except colon “:”, semi-colon “;”, Line Feed (hex: A, decimal: 10) or Carriage Return (hex: D, decimal: 13), up to a maximum length of 25 characters.

To query the current calibration date and expiry, send:

```
:system:calibration:date?  
:system:calibration:expiry?
```

New units leaving the DLS TestWorks facility will have the two dates set to “0”. DLS TestWorks takes no responsibility on the accuracy of the dates entered into the units, only the calibration sticker on the back or bottom of the unit is valid for the calibration date and expiry.



7 Impairments Commands Summary

When setting impairments, the NSA 400 command set uses the following general format:

:SourceA:AAAA:BBBB CCCC DD

where :SourceA specifies the ADSL noise card located inside the NSA 400 chassis.

:AAAA specifies the impairment generator (in one case two levels are required - i.e. for “pwrline”)

:BBBB specifies the parameter

CCCC specifies a value

DD specifies the [optional] or mandatory unit. For example, if setting the impulse level in mV, the units are optional, but if the level is in dBm they are mandatory.

It is assumed that the programmer is familiar to some extent with the block diagram and description of the impairments card as given in section 5.1 and 5.4.

The following list provides a summary of the commands. For more details refers to section 8.

:sourceA :output <boolean>

:xtalkA :type <choice >
:level <numeric value> [dBm]
:Program
:Data ,DD DD . . . >
:Start (JS)
:Name <Name, max:16 char>
:Minimum <-95 . . -65> [dBm]
:Maximum <-45 . . -15> [dBm]

:xtalkB :type <choice >
:level <numeric value> [dBm]
:Program
:Data ,DD DD . . . >
:Start (JS)
:Name <Name, max:16 char>



:Minimum <-95 .. -65> [dBm]
:Maximum <-45 .. -15> [dBm]

:xtalkC :type < choice >
:level<numeric value> [dBm]
:Program
:Data ,DD DD . . . >
:Start (JS)
:Name <Name, max:16 char>
:Minimum <-95 .. -65> [dBm]
:Maximum <-45 .. -15> [dBm]

:shaped :type < choice >
:level <numeric value> [uv/sqrt(Hz)]
:level <numeric value> dBm/Hz
:level <numeric value> dBm
:Program
:Data ,DD DD . . . >
:Start (JS)
:Name <Name, max:16 char>
:Size? (Z56)

:white :state < choice >
:white :level <numeric value> [dBm/Hz]

:impulse:type < choice >
:width <numeric value> [us]
:level <numeric value> [mV]
:level <numeric value> dB
:rate <numeric value> [pps]
:trigger



Impairments Commands Summary

```
:pwrline :freq <choice> [Hz]
          :metallic:harmonic1 < choice >
          :harmonic2 < choice >
          :offset <numeric value> [dB]

          :longitudinal :level <numeric value> [ $V_{RMS}$ ]

:quiet
```

```
:pwrline :freq <choice> [Hz]
          :metallic :harmonic1 < choice >
          :harmonic2 < choice >
          :offset <numeric value> [dB]
          :longitudinal :level <numeric value> [ $V_{RMS}$ ]
```

```
:Noise:Distribution <D4Mode|D2Mode>
```

```
:load1 <boolean>
:load2 <boolean>
:output <boolean>
:quiet
```



8 Impairments Commands Details

8.1 Output Stage

This command enables the complete disconnection of the generator from tip and ring even if any (or all) impairments may still be generated on the card. This command will also remove the loading effect of the output circuitry (typically around 4 kohms). To turn OFF all impairments without affecting the state of the output stage relay, use the “Quiet” command (see the command on page 69).

sourceA :output <boolean>

Range: OFF, ON

8.2 Low Frequency Crosstalk Generators (XtalkA and XtalkB)

The ADSL noise generator contains two independent low frequency crosstalk generator able to produce a variety of shaped white noise up to 600 kHz. The following tables are shown as a reference to the programmer.

Reference Levels (100 ohms)	
Type	Level [dB]
T1.601	-45.0
10-disturber DSL NEXT	-56.1
10-disturber HDSL NEXT	-47.6
10-disturber ADSL NEXT	-49.9
10-disturber HDSL+ADSL	-45.6
49-disturber ADSL upstream NEXT (ANSI T1.413 Issue I and II)	-43.3
49-disturber ADSL upstream FEXT (9kft 26AWG)	-69.1
49-disturber ADSL upstream NEXT (ITU G. Lite)	-43.3
49-disturber FDM ADSL downstream FEXT (13.5kft 26AWG)	-83.9
49-disturber ADSL upstream FEXT (13.5 kft 26 AWG)	-81.8
49-disturber HDSL2 downstream NEXT (H2TUC)	-33.9
49-disturber HDSL2 upstream NEXT (H2TUR)	-36.6



Number of disturbers	Level difference [dB]
49	+4.1
24	+2.3
20	+1.8
10	0.0
4	-2.4
1	-6.0

8.2.1 Xtalk Generator A - Type

:sourceA :xtalkA :type <choice>

Range: OFF
T1.601
DSLNEXT
HDSL
HDSL+ADSL

note: If you query the type of filter, and the filter is programmed from an external file, the return message will be external, or file name.

8.2.2 Xtalk Generator A - Level

:sourceA :xtalkA :level <numeric value> [dBm]
dB steps

Range: -75.0 to -30.0 dBm in 0.1

8.2.3 Xtalk Generator A – Program

:sourceA:xtalkA:Program:Data

:Start tells the system to start a new data set
:Name must be in quotes, and is a maximum of 16 characters.
 (Type will, by default, be 'external' unless a name is programmed)
:Minimum



and Maximum as per your level range

8.2.4 Xtalk Generator B - Type

:sourceA :xtalkB:type <choice>

Range: OFF
T1.601
DSLNEXT
HDSL
HDSL+ADSL
ADSLNEXT

8.2.5 Xtalk Generator B - Level

sourceA :xtalkB :level <numeric value> [dBm]
dB steps

Range: -75.0 to -30.0 dBm in 0.1

8.2.6 Xtalk Generator B – Program

:sourceA:xtalkB:Program:Data

:Start tells the system to start a new data set
:Name must be in quotes, and is a maximum of 16 characters.
(Type will, by default, be 'external' unless a name is programmed)
:Minimum
and Maximum as per your level range

8.3 High Frequency Crosstalk Generator (XtalkC)

The high frequency crosstalk generator on the ADSL noise generator allows the addition of shaped noise with frequency components up to about 2 MHz.

The following tables are shown as a reference to the programmer.



Type	Level [dB]
T1.601	-45.0
10-disturber DSL NEXT	-56.1
10-disturber HDSL NEXT	-47.6
10-disturber ADSL NEXT	-49.9
10-disturber HDSL+ADSL	-45.6
49-disturber ADSL upstream NEXT (ANSI T1.413 Issue I and II)	-43.3
49-disturber ADSL upstream FEXT (9kft 26AWG)	-69.1
49-disturber ADSL upstream NEXT (ITU G. Lite)	-43.3
49-disturber FDM ADSL downstream FEXT (13.5kft 26AWG)	-83.9
49-disturber ADSL upstream FEXT (13.5 kft 26 AWG)	-81.8
49-disturber HDSL2 downstream NEXT (H2TUC)	-33.9
49-disturber HDSL2 upstream NEXT (H2TUR)	-36.6

Number of disturbers	Level difference [dB]
49	+4.1
24	+2.3
20	+1.8
10	0.0
4	-2.4
1	-6.0

8.3.1 Xtalk Generator C - Type

:sourceA:xtalkC:type <choice>

Range: OFF
ADSLFEXT
ADSLA
ADSLB
T1
AMI



When selecting ADSLA in the high frequency crosstalk generator, make sure to select also the 10-tone type for the shaped noise generator, since ADSL Model A noise is made up of both Crosstalk noise and Shaped noise. The levels of shaped noise and ADSL model A noise that must be sent are different. The 10-tone noise must be set 36.2 dB less than the model A noise. For example, to set model A noise to -55.4 dBm, you should send:

```
:sourceA:xtalkC :type ADSLA
:sourceA:xtalkC :level -55.4 dBm
:sourceA:shaped:type 10-tone
:sourceA:shaped:level -91.6 dBm
```

8.3.2 Xtalk Generator C - Level

```
:sourceA :xtalkC :level <numeric value> [dBm]
```

Range: -85.0 to -35.0 dBm in 0.1 dB steps

8.3.3 Xtalk Generator C – Program

```
:sourceA:xtalkC:Program:Data
```

```
:Start      tells the system to start a new data set
:Name       must be in quotes, and is a maximum of 16 characters.
              (Type will, by default, be 'external' unless a name is programmed)
:Minimum
and Maximum as per your level range
```

8.4 Shaped Noise Generator

The shaped noise generator is a RAM-based generator which is able to generate a variety of discrete tones. Make sure to set the level using the appropriate unit.

8.4.1 Shaped Noise Generator - Type

```
:sourceA :shaped :type <choice>
```

Range: OFF
BASIC_RATE
HDSL
FTZ
10-tone



8.4.2 Shaped Noise Generator - Level

Level value could be issued using any of the three units ($\mu\text{V}/\text{Hz}$ or dBm/Hz or dBm). Level is typically in $\mu\text{V}/\text{Hz}$ when type selected is either BASIC_RATE, HDSL or FTZ. Level is in dBm when the type selected is 10-tone. Note that the units are NOT optional when setting the level in dBm/Hz or in dBm .

:sourceA :shaped :level <numeric value> [$\mu\text{V}/\text{sqrt}(\text{Hz})$]

Range: 3.2 to 100.0
 $\mu\text{V}/\text{Hz}$ in 0.1 $\mu\text{V}/\text{Hz}$
steps

OR

:sourceA :shaped :level <numeric value> dBm/Hz

Range: -101.3 to -71.3 in
0.1 dB/Hz steps

8.4.3 Shaped Noise Generator – Program

:sourceA:Shaped:Program:Data

:Start tells the system to start a new data set

:Name must be in quotes, and is a maximum of 16 characters.

(Type will, by default, be 'external' unless a name is programmed)

:Size

8.5 Flat White Noise Generator

The flat noise generator injects a flat white noise signal, with a 3-dB point located around 2 MHz.

8.5.1 Flat White Noise Generator - State

:sourceA :white :state <boolean>

Range: OFF, ON



8.5.2 Flat White Noise Generator - Level

:sourceA :white :level <numeric value> [dBm/Hz]

Range: -140.0 to -90.0
dBm/Hz in steps of 0.1 dB

8.6 Impulses

Seven different type of impulses may be selected. Four of them (3-level/bipolar/unipolar+/-) consist only of either 2 or 3 different levels. These type of impulses are calibrated in mV peak-to-peak, therefore the level should be sent using the mV as the unit of measurement. The pulse width (“ τ ”) is only enable when one of these type is selected. Beware that the unipolar+ and unipolar- may be of opposite polarity when viewed on a scope due to the inherent nature of a differential signal!

The other three types are complex waveform (cook, adsl-c1/c2). The command to set the level should include the dB units to the desired value.

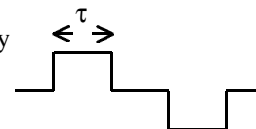
8.6.1 Impulses - Type

:sourceA :impulse :type <choice>

Range: off
3-level
bipolar
unipolar+
unipolar-
cook
adsl-c1
adsl-c2

8.6.2 Impulses - Width

The impulse width is defined as the duration of every transition in an impulse.





:sourceA :impulse :width <numeric value> [us] Range: 20 to 120 μ s in 1 μ s steps. Only applies for 3-level, bipolar and unipolar impulses.

8.6.3 Impulses - Level

:sourceA :impulse :level <numeric value> [mV] Range: 0.0 to 100.0 mV peak in 0.1 mV steps.
This syntax must be used only for non-complex impulses.

OR

:sourceA :impulse :level <numeric value> dB Range: -20.0 to +6.0 dB in 0.1 dB steps.
This syntax must be used **ONLY** for complex pulses.

Cook pulse levels are relative to a reference level of 318 mV (a value of -6.0 dB translates to 159 mV and -12.0 dB to 79 mV). ADSL pulses levels are relative to 0.316 mV.

8.6.4 Impulses - Rate

:sourceA :impulse :rate <numeric value> [pps] Range: 0 to 100 pulses per seconds in 1 pps steps



8.6.5 Impulses - Single Shot Trig

The single shot command generates a single impulse as soon as the command is received and decoded by the ADSL noise generator, whether the rate is set to zero or not.

:sourceA :impulse :trigger

Range: none

8.7 Powerline Related Impairments

Two types of impairments are generated by the ADSL noise generator due to the interference generated by the AC hydro lines. One of them is called “metallic” and the other one “longitudinal”.

The reference powerline frequency used in both cases (i.e. 50 or 60 Hz) is set by the following command:

:sourceA: pwrline :freq <choice> [Hz]

Choice: 50, 60 Hz

8.7.1 Metallic Noise

The powerline metallic noise is a low-level sinewave which is injected in differential mode. The frequency of the sinewave could be set to any odd harmonic, from the fundamental (50 or 60 Hz) up to the 11th odd harmonic (550 or 660 Hz). The ADSL noise card contains two generators that could be set independently of each other. The card will automatically disable the second tone generator if both frequencies are set equal.

8.7.1.1 Tone Generator - Harmonic #1 Frequency

:sourceA: pwrline: metallic: harmonic1 <choice>

Choice: 0 to 6

where 0 = off

1 = fundamental (50/60 Hz)

2 = 3rd harmonic (150/180 Hz)

3 = 5th harmonic (250/300 Hz)

4 = 7th harmonic (350/420 Hz)

5 = 9th harmonic (450/540 Hz)

6 = 11th harmonic (550/660 Hz)



The second frequency will automatically be disabled if both frequencies are equal.

8.7.1.3 Tone Generators - ANSI T1.601 Level Offset

The level of the sinewave is set using the following command. To turn off a tone entirely, use the tone frequency command. The ANSI T1.601 table is shown below as a quick reference to the programmer.

```
:sourceA: pwrline :metallic: offset <numeric value> [dB]
```

Range: -10.0 to +10.0 dB in 0.1 dB steps

ANSI T1.601 Metallic Noise Levels	
Frequency [Hz]	Tone Power [dBm]
60	-47
180	-49
300	-59
420	-65
540	-70
660	-74

Longitudinal noise is a high-level triangular waveform which is injected in common mode on the wireline using a transformer. The frequency of the waveform (either 50 or 60 Hz) is

When using the longitudinal noise, one or two longitudinal loads should be inserted on the circuit under test. The ETSI standard requires that two loads (located on both side of the transformer) be inserted any time the longitudinal voltage is generated. Otherwise only ONE load should be inserted on the CO side. See page 42 for more details on the longitudinal transformer.

```
:sourceA :pwrline :longitudinal :level<numeric value> [Vrms]
```

Range: 0 to 50 V_{RMS} in 1V steps when powerline frequency is 50 Hz.

The mode of the noise source for crosstalk and white noise is set by the command

8.9 Quiet

:sourceA: Quiet Range: none

```
: sourceA :pwrline :freq 60 Hz
      :metallic :harmonic1 0
      :harmonic2 0
      :offset 0.0 dB
      :longitudinal :level 0 Vrms
```




```
:impulse:type OFF
      :width 50 us
      :level 0.0 mV
      :rate 0 pps

:shaped :type OFF
      :level 3.2 uv/sqrt(Hz)

:xtalkA :type OFF
      :level -75.0 dBm

:xtalkB :type OFF
      :level -75.0 dBm

:xtalkC :type OFF
      :level -85.0 dBm

:white :level -140.0 dBm/Hz
      :state off
```

8.10 Sending Downloadable Shapes files to the NSA 400

For each downloadable shape, the file on disk is an ASCII text file. Three types of files are available and are differentiated by their extension: .LO1, .LO2 and .HI. The .LO1 files may be downloaded to either crosstalk generator A and B. The .LO2 files may only be downloaded to crosstalk generator B, while the .HI files may only be downloaded to crosstalk generator C. Keywords are used, and each starts with “_” and ends with “:”. Note that these parameters are stored in volatile RAM, which means that if the unit is turned off, or if another crosstalk noise is selected (including “OFF”), the entire programming sequence needs to be re-sent.

The following example describes how to send the file “HDSL2 Dn NEXT (H2TUC).Lo1 Rev 00” to the simulator. An entire captured programming sequence is also shown.



Impairments Commands Details

_Name: HDSL2 Dn NEXT (H2TUC).Lo1 Rev 00

This identifies the loaded xtalk shape. This is generally the same name as the filename.

_Description:

Name: HDSL2 Dn NEXT (H2TUC).Lo1 Rev00
Type: HDSL 2 downstream NEXT (H2TUC)
Std: ANSI T1E1.4 HDSL 2 Recommendation
Range: -30 to -80 dBm
Cal: 135 ohm
49 dist: -33.9 dBm
39 dist: -34.5 dBm
24 dist: -35.6 dBm
10 dist: -37.9 dBm

Free form description.

Skip to the next section.

_ Category:

For future use.

_Max: -30

Send :sourcea:xtalka:program:maximum <_Max>
e.g. :sourcea:xtalka:program:maximum -30

_Min: -80

Send :sourcea:xtalka:program:minimum <_Min>
e.g. :sourcea:xtalka:program:minimum -80



_Compatibility:

FLASHLO: 10

CONTROLLER: 16

The keywords FLASHLO and CONTROLLER are used in this section.

The symbol “:” precedes the minimum requirement. Any revision equal to **or** greater than the value which follows this symbol, will be considered compatible.

In this example, the file can only be downloaded if the FLASHLO rev is equal to or higher than 10 AND if the controller rev is 16 or higher.

Get the FLASHLO rev by issuing the command:

:sourcea:test:revision:flashlo

Get the CONTROLLER rev by issuing the command:

:sourcea:test:revision:controller



Impairments Commands Details

_Coefficients:

Send **:sourcea:xtalka:program:start**. The “start” command may be issued at any time, but must be done **before** issuing any “data” commands.

Send **:sourcea:xtalka:program:data xx,yy,zz,...** for dB Offset and the prg filter data in **1** command – this information will be contained in the first 2 lines under _Coefficients.

Throughout this process, numbers should be translated from decimal (or binary) to hexadecimal format. No suffixes are required (e.g. 81h should be sent as 81). Anything following a semi-colon should be discarded, as well as any “db” or “dw” statement. The db statement indicates that the number is a byte, dw indicates that it is a word. A hexadecimal value is followed by a “h”, a binary value is followed by a “b”, and a decimal does not have any suffix. Any blank line should be discarded.

```
db 081h,010h           ;dB Offset Hi/Lo
db 001h,01Dh,021h,036h ;prg filter data[0..3]: 3.5 dB/ 166
kHz
```

Send **:sourcea:xtalka:program:data xx,yy,zz,...** for the mux setting and FIR parameters in **1** command. This information will be contained in the next 8 lines.

```
db 00000000b           ;b3 = selxt1/ b4=selxt2/ b5= selxt3
db 00101000b           ;Base+0 - FIR Configuration
db 59                  ;Base+1 - FIR Length
db 01101000b           ;Base+3 - FIR Input format
db 00100001b           ;Base+4 - FIR Output timing
db 11001100b           ;Base+5 - FIR Output format
db 00000010b           ;Base+6 - FIR Symmetry (ODD)
db 01101000b           ;Base+7 - FIR Mix Factor
```



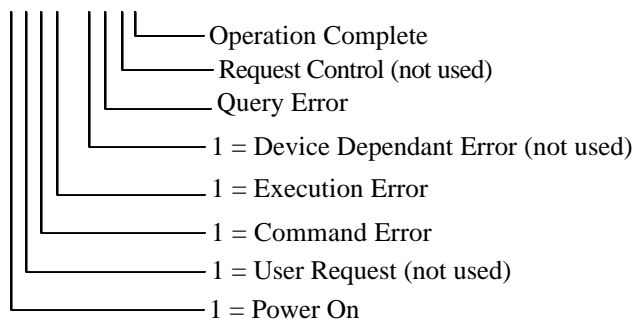
9 Common Command Set

As specified in the IEEE 488.2 standard, a number of common commands are required to set up and control the standard functions of remote-controlled devices. They can be used with both the IEEE 488 and the RS-232 interfaces. These common commands are as follows:

***CLS** Clear Status Command
Type: Status command
Function: Clears the Event Status Register (ESR). Clearing the Event Status Register will also clear ESB, the bit 5 of the Status Byte Register (STB). It has no effect on the output queue (bit 4 of the STB).

***ESE <NRf>** Event Status Enable
Type: Status command
Function: Sets the Event Status Enable Register (ESER) using an integer value from 0 to 255, representing a sum of the bits in the following bit map:

Bit: 7 6 5 4 3 2 1 0



Bit 7 to 0 have a respective value of 128, 64, 32, 16, 8, 4, 2 and 1. For example if bit 3 and 5 are set then the integer value is 40 (8+32).



The ESER masks which bits will be enabled in the Event Status Register (ESR). See section 9.1.2 for more detail.

On power-on, the register is cleared if the Power-on Status Clear bit is 1, or restored if the bit is 0 (see *PSC for more details).

*ESE?	Event Status Enable Query
Type:	Status command
Function:	An integer value between 0 and 255 representing the value of the Event Status Enable Register (ESER) is placed in the output queue. The possible values are described in the *ESE command section, and in more detail in section 9.1.2.
*ESR?	Event Status Register Query
Type:	Status command
Function:	An integer value between 0 and 255 representing the value of the Event Status Register(ESR) is placed in the output queue. Once the value is placed in the output queue, the register is cleared. The command will turn the REMOTE LED green if the LED was red. The possible values are described in the *ESE command section, and in more detail in section 9.1.2.
*IDN?	Identification Query
Type:	System command
Function:	Returns the ID of the unit. Upon receiving this command the NSA 400 will put the following string into the output queue:

DLS TESTWORKS LTD,NSA 400,<SN>,<Ver>

where:

<SN> is the serial number of the unit

<Ver> is the revision level of the control firmware (always 2 digits)



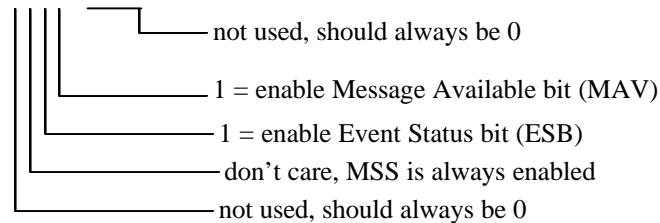
Common Command Set

*OPC	Operation Complete
Type:	Synchronization command
Function:	<p>Indicates to the controller when the current operation is complete. This command will cause the NSA 400 to set bit 0 in the Event Status Register (ESR) when all pending operations are completed. The bit is read with the *ESR? command, which also clear the bit.</p> <p>Communication can proceed as normal after this command, but be prepared to receive SRQ at any time. See section 9.2, “NSA 400 Synchronization” for more details.</p>
*OPC?	Operation Complete Query
Type:	Synchronization command
Function:	<p>Indicates when the current operation is complete. This will cause the NSA 400 to put an ASCII 1 (decimal 49, hex 31) in the output queue when the current operation is complete. Communication can proceed as normal after this command, but be prepared to receive the “1” at any time. See the section 6.9 “NSA 400 Synchronization” for more details.</p>
*PSC <Nrf>	Power-on Status Clear
Type:	Status and event command
Function:	<p>Indicates if the unit should clear the Service Request Enable Register and the Standard Event Status Register at power-on. If 1 (or higher) then all the enable registers are cleared at power-on, if 0 then all the enable registers are restored from the non-volatile RAM at power-on. The factory default is 1 (clear all the enable registers). Any change to the “Power-on Status” is saved in non-volatile RAM, and is always restored on power up.</p>
*PSC?	Power-on Status Clear Query
Type:	Status and even command
Function:	<p>Return the Power-on Status Clear value. If 1 then all the enable registers are cleared at power-on, if 0 then all the enable registers are restored from the non-volatile RAM at power-on. The factory default is 1 (clear all the enable registers).</p>



*RST	Reset
Type:	Internal command
Function:	IEEE 488.2 level 3 reset. This command will initialize the NSA 400 with the bypass loop, and cancel any pending *OPC operation. It will not affect the output buffer or other system settings of the unit. Note that this is NOT equivalent to the power-up reset and the IEEE 488 "Device".
*SRE <NRf>	Service Request Enable
Type:	Status command
Function:	Sets the Service Request Enable Register (SRER). An integer value indicates which service is enabled, with the following bit map:

Bit: 7 6 5 4 3 2 1 0



Bit 7 to 0 have a respective value of 128, 64, 32, 16, 8, 4, 2 and 1. For example if bit 4 and 5 are set then the integer value is 48 (16+32).

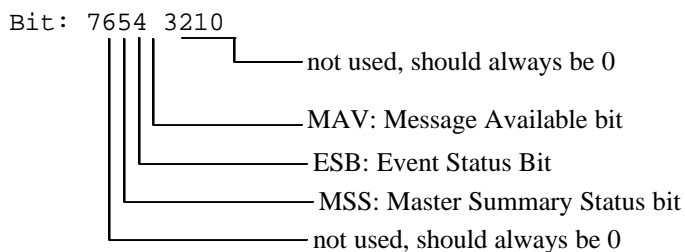
Note that if both MAV and ESB are disabled, then the bits MSS and RQS and the line SRQ are never going to be raised (see section 9.1.1 for more details).

On power-on, this register is cleared if the Power-on Status Clear bit is 1, or restored if the bit is 0 (see *PSC for more details).



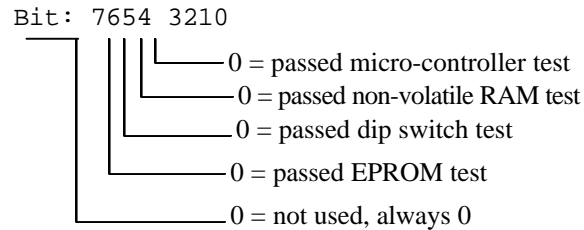
Common Command Set

*SRE	Service Request Enable Query
Type:	Status command
Function:	An integer value representing the value of the Service Request Enable Register is placed in the output queue. The possible values are listed in the *SRE command section.
*STB?	Status Byte Query
Type:	Status command
Function:	The value of the Status Byte Register is put into the output queue. Contrary to the “*ESR?” command, this register is not cleared by reading it. The register will be zero only when all its related structures are cleared, namely the Event Status Register (ESR) and the output queue.



Bit 7 to 0 have a respective value of 128, 64, 32, 16, 8, 4, 2 and 1. For example if bit 4 and 5 are set then the integer value is 48 (16+32). Note that bit 6 is MSS, which does not necessarily have the same value as RQS (see section 9.1.1 for more details).

*TST?	Self-Test Query
Type:	Internal command
Function:	Returns the results of the self-test done at power up. The number returned has the following bit map:



Bit 7 to 0 have a respective value of 128, 64, 32, 16, 8, 4, 2 and 1. For example if bit3 and 5 are set then the integer value is 40 (8+32).

***WAI** Wait to continue
Type: Synchronization command
Function: Used to delay execution of commands. The NSA 400 will ensure that all commands received before “*WAI” are completed before processing any new commands. This means that all further communication with the NSA 400 will be frozen until all pending operations are completed. See section 9.2, “NSA 400 Synchronization” for more details.

9.1 Status Reporting

There are two registers that record and report the system status, the Status Byte Register (STB), and the Event Status Register (ESR).

For both registers there are three basic commands: one to read the register, one to set the enabling bits, and one to read the enabling bits.

	Status Byte Register	Event Status Register
Read Register	*STB?	*ESR?
Set Enabling Bits	*SRE <NRf>	*ESE <NRf>
Read Enabling Bits	*SRE?	*ESE?

Where <NRf> is the new value of the register.



9.1.1 Status Byte Register (STB)

The bits of this register are mapped as follows :

bit 4: MAV (Message Available Bit)

Indicates that the Output Queue is not empty. If MAV goes high and is enabled then MSS goes high.

bit 5: ESB (Event Status Bit)

It indicates that at least one bit of the Event Status Register is non zero and enabled. If ESB goes high and is enabled then MSS goes high.

bit 6: MSS/RQS (Master Summary Status/Request Service)

MSS is raised when either MAV or ESB are raised and enabled. When the status of MSS changes, the whole Status Byte Register is copied into the Status Byte of the GPIB controller, where bit 6 is called. When RQS goes high so does the SRQ line, and in response to an IEEE 488.1 Serial Poll command, both are cleared.

RQS and SRQ are defined by the IEEE 488.1 standard and are hardware related. MSS summarizes all the status bits of the DLS 60, as defined by the IEEE 488.2 standard.

bits 7, 3, 2, 1, and 0: those bits are not used by the NSA 400.

9.1.2 Event Status Register (ESR)

The Event Status Register monitors events within the system and reports on those enabled. It records transitory events as well. The NSA 400 implements only the IEEE 488.2 Standard Event Status Register (ESR). It is defined as:

bit 0 Operation Complete. This bit is set in response to the *OPC command when the current operation is complete.

bit 1 Request Control. The NSA 400 does not have the ability to control the IEEE bus, and so this bit is always 0.



- bit 2 Query Error. There was an attempt to read an empty output queue or there was an output queue overflow. (maximum output queue capacity is 75 bytes).
- bit 3 Device Dependent Error. This error bit will be set for example if the longitudinal voltage is set above 50 V when the powerline frequency is set to 50 Hz.
- bit 4 Execution Error. The data associated with a command was out of range.
- bit 5 Command Error. Either a syntax error (order of command words) or a semantic error (spelling of command words) has occurred. A GET (Group Execute Trigger) command will also set this bit.
- bit 6 User Request. Indicates that the user has activated a Device Defined control through the front panel. Not used, so this bit is always 0.
- bit 7 Power on. This bit is set when the NSA 400 is turn on. Sending *ESR? clears the bit and stays clear until the power is turned on again.

The setting of the Event Status Register can be read with the Event Status Register query command (*ESR?). This will put the value of the register in the output queue, AND will clear the register.

9.2 NSA 400 Synchronization

The program controlling the NSA 400 can use three different commands to synchronize with the NSA 400: *OPC, *OPC? and *WAI. Following are the main differences:

	Set Operation Complete bit when Done	Return "1" when operation complete	Raise SRQ when operation complete	Block comm. with the NSA 400	Required Enable Bit(s)
*OPC	Yes	No	Yes (1)	No	Operation Complete, ESB
*OPC?	No	Yes	Yes (2)	No	MAV
*WAI	No	No	No	Yes	none



Common Command Set

- (1) if “Operation Complete” and ESB are enabled
- (2) if MAV is enabled

The main difference between OPC and WAI is that WAI will block any further communication with the NSA 400 until all pending operations are completed.

The main difference between *OPC and *OPC? is that *OPC sets the “Operation Complete” bit, and *OPC? will return an ASCII “1” when all pending operations are completed.

Make sure that all the required enable bits are set.

When using *OPC or *OPC?, the program controlling the NSA 400 can determine when the operation is completed by waiting for SRQ, or by reading the status byte with the serial poll or with *STB? (if corresponding bits are enabled).

If the program uses the *OPC? command and then sends more queries, the program must be ready to receive the “1” concatenated to other responses at any time. When using *WAI, the communication time out should be set long enough to avoid losing data (the NSA 400 needs approximately 2 seconds to set a loop).

10 Fuse Configuration

In North America only one of the AC supply lines is live, and needs to be fused. However in many other countries both AC supply lines are live, and may need to be fused. The NSA 400 is shipped with the 2 fuse configuration.

To replace a blown fuse (or fuses), follow this procedure:

- 1) Remove the power cord.
- 2) Using a small flat screwdriver, open the fuse box cover in the power module at the back of the NSA 400.
- 3) Locate the blown fuse(s) and replace it (them) with a type “T” (5 x 20 mm), 2 A/250 V, Slow blow.
- 4) Reassemble the fuse holder.
- 5) Connect the power cord to the unit.



11 TROUBLE SHOOTING

11.1 NSA 400 Self-Test

When you switch on the power or issue a reset, the NSA 400 does a series of self-tests. If any of the self-tests fail, the NSA 400 will flash the POWER LED red, in which case you should call the factory.

Following is a short description of some of the self-tests the NSA 400 performs:

- ◆ Checks if the checksum of the EPROM is valid.
- ◆ Checks if the non-volatile RAM and its self-contained battery are functional. The battery has an expected life of over 10 years, and, if necessary, can be easily replaced.
- ◆ Checks if the micro-controller is functional.

11.2 Power/Remote LED

- 1) The power LED flashes red:

At power up, the NSA 400 performs a self-test. If this self-test fails, the power LED flashes red. If this happens, consult the factory.

- 2) The power LED is orange:

If the NSA 400 detects an internal error, it does a full system initialization and turns the power LED yellow. If this happens, consult the factory.

- 3) The power LED is yellow:

If the NSA 400 detects an IEEE 488 error, it resets the IEEE 488 interface and turns the power LED yellow. If this happens, it's probably due to a bug in the software, such as having too small an input buffer.

- 4) The remote LED is off:

This is normal after a power-up or a reset.



- 5) The remote LED is red:

The NSA 400 received an invalid command from the control computer. See section 3.3 for more details.

11.3 Serial Communication Problems

- 1) Check that no device (such as a mouse) is connected to the same serial (COM)port as the NSA 400.
- 2) Check the cabling.
- 3) Check that both cards in the NSA 400 chassis are firmly seated in their sockets. Using anti-static precautions, open the front pane and push firmly on both cards.
- 4) If the remote LED is red, you may have sent an invalid command. See sections 3.3 and 9 for more details.
- 5) Queries must be terminated with a question mark.

11.4 IEEE 488 Communication Problems

- 1) Check that no device has the same IEEE 488 address as the NSA 400.
- 2) Check that the National Instruments interface card is configured correctly.
- 3) Check that the IEEE 488 address of the NSA 400 corresponds to the address set in the program. See section 6.1.2 for more details.
- 4) Check the cabling.
- 5) Check that both cards in the NSA 400 chassis are firmly seated in their sockets. Using anti-static precautions, open the front panel and push firmly on all the cards.
- 6) The NSA 400 does not raise SRQ after a query: You must enable all the relevant bits before using. For example, to raise SRQ when there is a message available (MAV) send the command “*SRE 16”. See sections 6.1.3 and 9 for more details.
- 7) If the remote LED is red, you may have sent an invalid command. See sections 3.3 and 9 for more details.
- 8) Queries must be terminated with a question mark.



12 REFERENCES

- ◆ ANSI T1.601-1991, ISDN Basic Access Interface for use on Metallic Loops for Application on the Network Side of the NT (American National Standards Institute, 11 West 42nd Street, New York, NY 10036, USA)
- ◆ ANSI Technical Report on High Bit Rate Digital Subscriber Lines (HDSL) - June 1992 (American National Standards Institute, 11 West 42nd Street, New York, NY 10036, USA)
- ◆ ANSI T1.413-1995, Asymmetric Digital Subscriber Line (ADSL) Metallic Interface (American National Standards Institute, 11 West 42nd Street, New York, NY 10036, USA)
- ◆ ETSI ETR-80, ISDN Basic Access Digital Transmission System on Metallic Local Lines (European Telecommunication Standards Institute Secretariat 06921 Sophi Antipolis, Cedex, France, Tel:+33 92 94 4200, Fax:+33 93 65 4716)
- ◆ ETSI TS 102 080 ISDN Standard (European Telecommunication Standards Institute Secretariat 06921 Sophi Antipolis, Cedex, France, Tel:+33 92 94 4200, Fax:+33 93 65 4716)
- ◆ ETSI RTR/TM 03036, High Bit Rate Digital Subscriber Line (HDSL) Transmission on Metallic Local Lines (European Telecommunication Standards Institute Secretariat 06921 Sophi Antipolis, Cedex, France, Tel:+33 92 94 4200, Fax:+33 93 65 4716)
- ◆ FTZ 1TR220, PCM Data Transmission at 64 kbps (FTZ, DBP Telekom, Postfach 100 003, D-64276, Darmstadt, Germany).
- ◆ IEEE 488.1-1987, IEEE Standard Digital Interface for Programmable Instrumentation (The Institute of Electrical and Electronics Engineers, Inc. 345 East 47th Street, New York, NY 10017-2394, USA)
- ◆ IEEE 488.2-1992, IEEE Standard Codes, Formats, Protocols, and Common Commands (The Institute of Electrical and Electronics Engineers, Inc. 345 East 47th Street, New York, NY 10017-2394, USA)



- ◆ SCPI Standard Commands for Programmable Instruments, available from some interface controller manufacturers (SCPI Consortium, 8380 Hercules Drive, Suite P.S., La Mesa, CA 91942, Phone: (619) 697-8790, Fax: (619) 697-5955)
- ◆ ITU-T G.992.2 Draft (formerly G.Lite), Splitterless Asymmetric Digital Subscriber Line (ADSL) Transceivers (International Telecommunication Union, Place des Nations, CH1211 Geneva 20, Switzerland).



13 WARRANTY

DLS TestWorks warrants all equipment bearing its nameplate to be free from defects in workmanship and materials, during normal use and service, for a period of twelve (12) months from the date of shipment.

In the event that a defect in any such equipment arises within the warranty period, it shall be the responsibility of the customer to return the equipment by prepaid transportation to a DLS TestWorks service centre prior to the expiration of the warranty period for the purpose of allowing DLS TestWorks to inspect and repair the equipment.

If inspection by DLS TestWorks discloses a defect in workmanship or material it shall, at its option, repair or replace the equipment without cost to the customer, and return it to the customer by the least expensive mode of transportation, the cost of which shall be prepaid by DLS TestWorks.

In no event shall this warranty apply to equipment which has been modified without the written authorization of DLS TestWorks, or which has been subjected to abuse, neglect, accident or improper application. If inspection by DLS TestWorks discloses that the repairs required to be made on the equipment are not covered by this warranty, the regular repair charges shall apply to any repairs made to the equipment.

If warranty service becomes necessary, the customer **must** contact DLS TestWorks to obtain a return authorization number and shipping instructions:

DLS TestWorks
169 Colonnade Road
Nepean, Ontario, Canada
K2E 7J4
Telephone: (613) 225-6087
Fax: (613) 225-6315
Toll Free: 1-800-465-1796
sales@dlstestworks.com

Consultronics (Europe)
Unit A
Omega Enterprise Park
Electron Way, Chandlers Ford
Hampshire, England
SO5 3SE
Telephone: 0703 270222
Fax: 0703 270333

Or your local DLS TestWorks representative



This warranty constitutes the only warranty applicable to the equipment sold by DLS TestWorks and no other warranty or condition, statutory or otherwise, expressed or implied, shall be imposed upon DLS TestWorks nor shall any representation made by any person, including a representation by a representative or agent of DLS TestWorks, be effective to extend the warranty coverage provided herein.

In no event (including, but not limited to the negligence of DLS TestWorks, its agents or employees) shall DLS TestWorks be liable for special consequential damages or damages arising from the loss of use of the equipment, and on the expiration of the warranty period all liability of DLS TestWorks whatsoever in connection with the equipment shall terminate.



14 SHIPPING THE NSA 400

To prepare the NSA 400 for shipment, turn the power off and disconnect all cables, including the power cable, and pack the noise generator in the original carton. Do not place any cables or accessories directly against the front panel as this may scratch the surface of the unit. We suggest that you mark all shipments with labels indicating that the contents are fragile.

If sending a unit back to the factory, ensure that the return authorization number given by our customer service department is shown on the outside.



15 SPECIFICATIONS

15.1 General

The NSA 400 simulates a variety of impairments which can be used to test according to the following National and International standards:

- ◆ ANSI T1.601 ISDN Basic Access Interface
- ◆ ANSI Technical Report on HDSL
- ◆ ANSI T1.413, Issue I
- ◆ ANSI T1.413, Issue II
- ◆ ANSI Proposed Working Draft for HDSL2 Standard (T1E1.4/98-268)
- ◆ ITU-T G.992.2 (G.Lite) Specification
- ◆ ETSI TS 102 080 ISDN Standard (formerly ETR 80)
- ◆ ETSI ETR 152 HDSL Standard
- ◆ ETSI ETR 328 – Model A
- ◆ ETSI ETR 328 – Model B

The user can set the impairments using the IEEE 488 or the RS-232 interface. The command language in both cases is based on the Standard Commands for Programmable Interfaces (SCPI) standard.

15.2 Impairments Generators

The NSA 400 consists of seven discrete generation sections. The features associated with one generator operate independently of the others. However, the options within a section can only be activated one at a time. The seven sections are:

- ◆ White noise generator
- ◆ 2 x low frequency (500 KHz) NEXT shaped PSD generator
- ◆ 1 x high frequency (2.0 MHz) NEXT shaped PSD generator
- ◆ Shaped noise generator
- ◆ Impulse generator
- ◆ Powerline related metallic noise
- ◆ Longitudinal noise



The output circuit is balanced with a minimum Thevenin impedance of 4000 ohms over the range 50 Hz to 2.0 MHz.

15.2.1 White Noise Generator

Level:	-90.0 to -140.0 dBm/Hz, variable in 0.1 dB steps
Form:	Gaussian amplitude distribution to 5 sigma
Bandwidth:	50 Hz to 2.0 MHz

15.2.2 NEXT Generators A and B

Level:	Levels are varied in 0.1 dB steps over a range from 6 dB below the 1 disturber level to 10 dB above the 49 disturber level. The absolute power associated with each will vary according to the NEXT PSD shape selected.
Power:	The total power of each shape is accurate to within +/- 0.5 dBm
Accuracy:	Each shape will track the reference shape to within +/- 1.0 dB, down to a level 45 dB below the peak. Each reference may deviate its' null frequencies by +/- 5.0%.
Shapes:	<p>The following shapes are available in Generators A and B:</p> <ul style="list-style-type: none">• ANSI T1.601 - 320 kHz bandwidth• ANSI HDSL Technical report - DSL NEXT• ANSI HDSL Technical report - HDSL NEXT• ANSI ADSL Technical report - ADSL + HDSL NEXT• ANSI ADSL Technical report - ADSL NEXT• ANSI T1.413, Issue II – ADSL upstream NEXT• ANSI T1.413, Issue II – ADSL upstream FEXT (9 kft, 26 AWG)• ANSI Proposed Working Draft for HDSL2 Standard – HDSL2 downstream NEXT (H2TUC)



- ANSI Proposed Working Draft for HDSL2 Standard – HDSL2 downstream NEXT (H2TUR)
- ITU-T G.992.2 (G. Lite) Standard – FDM ADSL downstream NEXT
- ITU-T G.992.2 (G. Lite) Standard – FDM ADSL downstream FEXT (15.5 kft of 26 AWG)
- ITU-T G.992.2 (G. Lite) Standard – ADSL upstream FEXT (13.5 kft of 26 AWG)

15.2.3 NEXT Generator C

Level:	Levels are varied in 0.1 dB steps over a range from 10 dB below the 1 disturber level to 10 dB above the 49 disturber level. The absolute power associated with each will vary according to the NEXT PSD shape selected.
Power:	The total power of each shape is accurate to within +/- 1.5 dBm
Accuracy:	Each shape will track the reference shape to within +/- 1.0 dB, down to a level 40 dB below the peak. Each reference may deviate its' null frequencies by +/- 5.0%.
Shapes:	<p>The following shapes are available in the High Frequency NEXT Generator.</p> <ul style="list-style-type: none"> • ANSI T1.413, Issue I - ADSL FEXT • ETSI ETR 328 – Model A • ETSI ETR 328 – Model B • North American 1.544 MBps T1 • International 2.048 MBps AMI • ANSI T1.413, Issue II – T1 (AMI) NEXT • ANSI T1.413, Issue II – EC ADSL downstream NEXT • ANSI T1.413, Issue II – FDM downstream FEXT (9 kft, 26 ga) • ITU-T G.992.2 (G. Lite) Standard – EC ADSL downstream NEXT • ITU-T G.992.2 (G. Lite) Standard – FDM ADSL downstream NEXT



15.2.4 Shaped Noise Generator

This section is used to generate a series of discrete tones. Its main application is to generate either the shaped noise called for in both the ETSI ISDN and HDSL recommendations or the 10 discrete tones called for in ETSI ETR 328.

Noise:	Shaped to either ETSI ISDN, ETSI HDSL or FTZ 1TR 220
Level:	-40.0 to +20.0 dB relative to the published reference level
“10 Tone”:	As per ETSI ETR 328
Level:	-20.0 to +20.0 dB relative to the published reference level.

15.2.5 Impulses

Types:	This generator produces 7 different impulses. 4 are standard multi-level (unipolar + & -, bipolar, 3-level) , 2 are complex as per ANSI T1.413, Annex “C”, and one is the ETSI Cook pulse.
Timing:	The duration of the 4 multi-level impulses can be varied between 20 and 120 microseconds in 1 microsecond steps.
Levels:	Multi-level: 0.5 to 100.0 mVolts, 0.1 mV steps ANSI: 5.0 to 100.0 mVolts, 0.1 mV steps. Cook: -20 to +6 dB relative to the reference, 0.1 dB steps

15.2.6 Powerline Related Metallic Noise

Type:	Dual tones as per ANSI T1.601
Level:	-10.0 to +10.0 dB relative to ANSI reference levels, 0.1 dB steps.

15.2.7 Longitudinal Noise

Type:	Triangular waveform
Frequency:	50 or 60 Hz



Level: 0-60 Volts RMS at 60 Hz. 0-50 Volts at 50 Hz, 1 volt steps using external balanced transformer (ANSI).
0-25 Volts RMS at 50/60 Hz (ETSI).

15.2.8 Externally Generated Signals

In addition to the generators, this section conditions externally-generated signals, and applies them to the line.

Frequency: 50 Hz to 2.0 MHz at all levels up to -30 dBm. 1kHz to 2.0 MHz at levels up to -10 dBm.

Input: 50 ohm BNC

Output: External signals are attenuated by 20 dB and summed with other noise signals and injected through the standard output circuit.

15.3 Physical

Construction: Main chassis plus plug-in controller and noise modules.

Connectors: Bantam jacks, RJ-45 connector and 3-pin balanced CF for differential output. 2-pin terminal block for longitudinal output. BNC connector for external signals input.

15.4 IEEE 488 Remote Control

The unit can be controlled via an IEEE 488 interface. The unit supports the following functions:

- 1) Listener
- 2) Talker
- 3) Local Lockout
- 4) Serial Poll
- 5) Selective Device Reset
- 6) Bus Reset
- 7) Primary Addressing from 0 to 30



15.5 RS-232 Remote Control

The unit can be controlled via an RS-232 serial interface. The unit is configured with 9600 bps baud rate, no parity, 8 data bits per character, 1 stop bit and RTS/CTS hardware flow control.

15.6 System

- 1) NSA 400 Chassis
- 2) NSA 400 Control Software
- 3) Manual
- 4) Power cord
- 5) 2 fuses

15.7 Options

National Instruments GPIB-PCII / ZZA interface card.

15.8 Electrical

15.8.1 AC Power

Rated Input Voltage: 100-240VAC($\pm 10\%$) (Automatic line voltage sensing).

Rated Frequency: 50-60Hz.

Rated Power consumption: 120VA max.

Line Fuses: Type "T" 2A/250V SLOW BLOW (2 required, 5mm x 20mm).

15.9 Environmental

Operating Temperature: $+10^{\circ}\text{C}$ to $+40^{\circ}\text{C}$.

Storage Temperature: $+10^{\circ}\text{C}$ to $+40^{\circ}\text{C}$.

Humidity: 90% (non-condensing) max.



15.10 Mechanical

Weight: 12 kg
Dimensions: 483mm x 355mm x 145mm (W x D x H).

15.11 Operating Conditions

In order for the unit to operate correctly and safely, it must be adequately ventilated. The NSA 400 contains ventilation holes for cooling. Do not install the equipment in any location where the ventilation is blocked. For optimum performance, the equipment must be operated in a location that provides at least 10 mm of clearance from the ventilation holes. Blocking the air circulation around the equipment may cause the equipment to overheat, compromising its reliability.



16 SAFETY

16.1 Information

16.1.1 Protective Grounding (Earthing)

This unit consists of an exposed metal chassis that is connected directly to ground (earth) via a power cord. The symbol used to indicate a protective grounding conductor terminal in the equipment is shown in this section under "symbols".

16.1.2 Before Operating the Unit

- ◆ Inspect the equipment for any signs of damage, and read this manual thoroughly.
- ◆ Become familiar with all safety symbols and instructions in this manual to ensure that the equipment is used and maintained safely.

WARNING: To avoid risk of injury or death, ALWAYS observe the following precautions before operating the unit.

- ◆ Use only a power supply cord with a protective grounding terminal.
- ◆ Connect the power supply cord only to a power outlet equipped with a protective earth contact.
- ◆ Never connect to an extension cord that is not equipped with this feature.
- ◆ Do not wilfully interrupt the protective earth connection.
- ◆ When lifting or handling the unit do not touch the cooling fan which is located at the back of the unit.

16.1.3 Supply Power Requirements

The unit can operate from any single phase AC power source that supplies between 100V and 240V ($\pm 10\%$) at a frequency range of 50 Hz to 60 Hz. For more information, see the specifications section of this manual.



WARNING: To avoid electrical shock, do not operate the equipment if it shows any sign of damage to any portion of its exterior surface, such as the outer casting or panels.

16.1.4 Mains Fuse Type

The fuse type used is specified in the specifications section of this manual.

16.1.5 Connections to a Power Supply

In accordance with international safety standards, the unit uses a three-wire power supply cord. When connected to an appropriate AC power receptacle, this cord grounds the equipment chassis.

16.1.6 Operating Environment

To prevent potential fire or shock hazard, do not expose the equipment to any source of excessive moisture.

16.1.7 Class of Equipment

The unit consists of an exposed metal chassis that is connected directly to earth via the power supply cord. In accordance with the harmonized EUROPEAN STANDARD EN 61010-1:1993, it is classified as Safety Class I equipment .

16.2 Instructions

The following safety instructions must be observed whenever the unit is operated, serviced or repaired. Failing to comply with any of these instructions or with any precaution or warning contained in the Operating and Reference Manual is in direct violation of the standards of design, manufacture and intended use of the equipment. DLS TestWorks Ltd. assumes no liability for the customer's failure to comply with any of these requirements.

16.2.1 Before Operating the Unit

- ◆ Inspect the equipment for any signs of damage, and read the Operating and Reference Manual thoroughly.
- ◆ Install the equipment as specified in the relevant section of this manual.



Safety

- ◆ Ensure that the equipment and any devices or cords connected to it are properly grounded.

CAUTION: When **lifting or handling the unit**, do not touch the **cooling fan** which is located at the rear of the unit.

16.2.2 Operating the Unit

- ◆ Do not operate the equipment when its covers or panels have been removed.
- ◆ Do not interrupt the protective grounding connection. Any such action can lead to a potential shock hazard that could result in serious personal injury.
- ◆ Do not operate equipment if an interruption to the protective grounding is suspected. Ensure that the instrument remains inoperative.
- ◆ Use only the type of fuse specified.
- ◆ Do not use repaired fuses and avoid any situation that could short circuit the fuse.
- ◆ Unless absolutely necessary, do not attempt to adjust or perform any maintenance or repair procedure when the equipment is opened and connected to a power source at the same time. Any such procedure should only be performed by qualified service professional.
- ◆ Do not attempt any adjustment, maintenance or repair procedure to the equipment if first aid is not accessible.
- ◆ Disconnect the power supply cord from the equipment before adding or removing any components.
- ◆ Operating the equipment in the presence of flammable gases or fumes is extremely hazardous.
- ◆ Do not perform any operating or maintenance procedure that is not described in the Operating and Reference Manual or the Service Manual.
- ◆ Some of the equipment's capacitors may be charged even when the equipment is not connected the power source.

16.3 Symbols

The following symbols appear on the unit, this is their meaning:



Figure 35 - Equipotentiality-Functional Earth Terminal



Figure 36 - Protective Grounding Conductor Terminal

Appendix A - INTERPRETATION OF LEVEL UNITS

This appendix discusses the relation between the simulator setting and the real noise it represents.

In all cases the objective is to choose a setting that corresponds to the reading of a level meter connected to the equipment. Since we know that the noise SOURCE is unchanged, the reading will only change according to the bandwidth and the impedance of the meter (designated the Load Impedance).

In Impairment modules the units used in setting levels are designed to give a compromise between commonly used units and those that are unambiguous.

There are three forms of units that are used:

- 1) $\mu\text{V}/\sqrt{\text{Hz}}$ - Is independent of the Load Impedance and the bandwidth of the measuring device. It therefore requires the most manipulation to be translated into a meter reading.
- 2) dBm/Hz - Is independent of the bandwidth of the meter but not of the impedance. Therefore, when using a setting of $x \text{ dBm}/\text{Hz}$ the Load Impedance must be previously defined.
- 3) dBm - Is related to both Load Impedance and bandwidth. When using a setting of $x \text{ dBm}$ the Load Impedance and the bandwidth must both have been previously defined.

Following is a set of examples on how to convert a unit to dBm , the most common readout of level meters.

1. $\mu\text{V}/\sqrt{\text{Hz}}$ to dBm

For this example we will assume that the load impedance is 135Ω and the bandwidth is 3 KHz.

Assume that the setting is $10 \mu\text{V}/\sqrt{\text{Hz}}$:

$$\begin{aligned} V * V &= (\mu\text{V}/\sqrt{\text{Hz}}) * (\mu\text{V}/\sqrt{\text{Hz}}) * \text{Bandwidth} \\ &= (10\text{E-}6) * (10\text{E-}6) * 3000 \\ &= 3.00\text{E-}7 \end{aligned}$$

$$\begin{aligned} P(\text{load}) &= V * V / R \text{ watts} \\ &= (3.00\text{E-}7) / 135 \text{ watts} \\ &= 2.22\text{E-}9 \text{ watts} \end{aligned}$$

$$\begin{aligned} P(\text{ref}) &= 1\text{E-}3 \text{ watts} \\ \text{dBm} &= 10 * \text{LOG} [P(\text{load})/P(\text{ref})] \text{ dBm} \\ &= 10 * \text{LOG} [(2.22\text{E-}9)/(1\text{E-}3)] \text{ dBm} \\ &= -56.5 \text{ dBm} \end{aligned}$$

2. dBm/Hz to dBm

Here we will assume that the bandwidth is 3000 Hz and the setting is -70 dBm/Hz.

$$\begin{aligned} \text{dBm} &= \text{dBm/Hz} + 10 * \text{LOG} (\text{bandwidth}) \text{ dBm} \\ &= -70.0 + 10 * \text{LOG} (3000) \text{ dBm} \\ &= -70.0 + 34.8 \text{ dBm} \\ &= -35.2 \text{ dBm} \end{aligned}$$

Notes:

A) To change a level in $\mu\text{V}/\sqrt{\text{Hz}}$ by a certain number of dB use the following formula:
(Assume x is the amount to change the $\mu\text{V}/\sqrt{\text{Hz}}$ setting by, and the dB change required is -6 dB.)

$$\begin{aligned} x &= 10 (y / 20) \\ &= 10 (-6 / 20) \\ &= 0.50 \end{aligned}$$

Therefore the original setting in $\mu\text{V}/\sqrt{\text{Hz}}$ should be multiplied by 0.50 to give a change of -6 dB.

Note: To change a level in dBm/Hz by a certain number of dB simply change the dBm/Hz setting by the required amount. An examination of the formula on this section will bear this out.

3. Loading

As can be seen from the above discussion the choice of loads plays a large part in the level that the meter will read. One of 3 loads are used when calibrating DLS TestWorks Impairments (Noise) generators. In all cases any wirelines in place are set to zero length.

Appendix A

They are 50 Ohms, 67.5 Ohms, and one 135 Ohm resistor in parallel with one complex impedance as described in Appendix E.

These impairments are calibrated using a 50 Ohms load:

Crosstalk Noises

ADSL FEXT, ADSL NEXT, ADSL MODEL A, ADSL MODEL B, T1, E1 AMI,
ADSL+HDSL

White Noise

Impulses

Complex Impulse A and B (used in ANSI ADSL testing)

These impairments are calibrated using a 67.5 Ohms load:

Crosstalk Noises

DSL, HDSL

Shaped Noises

ISDN (ETSI), HDSL (ETSI), FTZ

Impulses

3-LEVEL, COOK PULSE

These are calibrated with a load of 135 Ohms in parallel with an ANSI Load:

Crosstalk Noises

T1.601

Dual Tones

See Appendix E for a description of the complex ANSI load.

Notes:

DLS TestWorks has consistently used 50 Ohms when calibrating ADSL Model A and Model B noises, recommended for testing systems operating in a 2048 kbps environment. We understand that this is a mis-interpretation of the spec on our part. This leads to DLS 400, DLS 400E and NSA 400 units generating 6 dB too much for these two impairments only.

You are advised that if you are following an ANSI or ETSI recommendation that calls for calibrated noises of -49.4 dBm of model A noise, or -43.0 dB of model B noise, you should set the DLS 400, DLS 400E or NSA 400 to -55.4 or -49.0 dBm respectively.

Appendix B - DLS 200 MODE

In February 1997, DLS TestWorks released an enhancement to the DLS 400 that affects both the loops and the impairments generator. The effect of this addition is to allow users to obtain test results using a DLS 400 that are very close to test results using a DLS 200 and DLS 200H.

Before this, customers found that, for example, testing HDSL modems with a DLS 200H gave performance results that were up to 3 dB better than when the same equipment was tested using a DLS 400, with resulting confusion. The enhancement enables users to test using a “DLS 200 Compatible” mode if they wish. Of course the original “DLS 400” mode is still available so that you can obtain the same test results that you always got in the past using a DLS 400.

The enhancement can be retro-fitted if desired, to all DLS 400's and NSA 400, and is standard on present production. This manual describes the NSA 400 with the enhancement included. The full enhancement involves changes to both the loops and the impairments generator.

DLS 400 mode is the default mode, so a user taking no special action will be using the original impairments and loops.

Appendix C - MEASUREMENTS

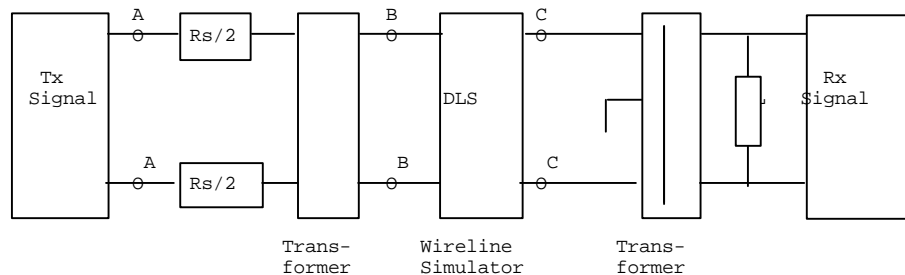
1. Measurement of Wireline Simulators

Data for the characteristics of 19, 22, 24 and 26 AWG lines were obtained from Bell System Technical Reference PUB 62310. This provides information on the line's attenuation FOR AN INFINITELY LONG LINE. Data for other wirelines are generally specified in terms of resistance, impedance, capacitance and conductance per unit length of line as it varies with frequency. This is easily converted into characteristics of an infinitely long line.

When measuring the response of a simulated line, it is of finite length, may be made up of several different gauges of wire and is usually terminated in a real load. There are several common ways to measure the amplitude response of electronic systems. Referring to the figure these are:

1. The amplitude of the TRANSFER FUNCTION from BB to CC.
2. Some engineers include the source resistors in the system and measure from AA to CC.
3. Yet others measure using method 2, subtract 6dB from the attenuation and quote the result. This is called the INSERTION LOSS of the system.

For wireline measurement, method 3, the insertion loss method is standard.



Attenuation of a wireline simulator is correct when used with balanced, metallic (differential mode) signals which are injected and received by transformers. See the figure above. The transformers may be included with the Transmit (Tx) Signal generator and Receive (Rx) Signal device. The centre tap of the receive transformer need not be grounded, but may be if no other point between the transformers is grounded.

THE USE OF UNBALANCED SIGNALS THROUGH THE DLS WILL USUALLY GIVE INCORRECT MEASUREMENTS.

2. Common Errors

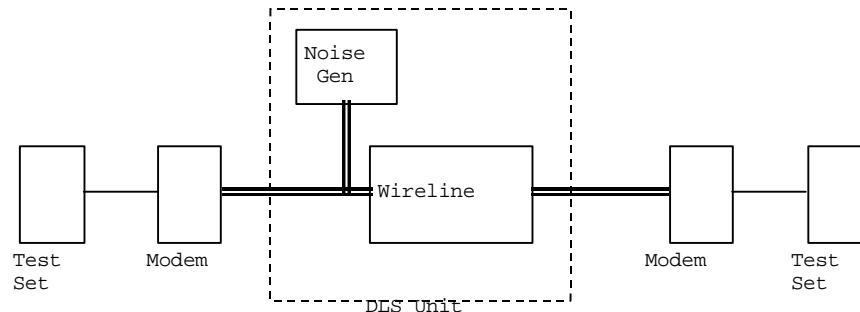
- ◆ Coupling between input and output via the two transformers. When trying to measure attenuations of 60 dB or so, approximately 1/1000 of the input voltage, or 1/1000000 of the input power is present on the output. It is very easy for transformers --- or even wires—placed close to each other to couple together far more than this. Take care to keep inputs and outputs separate.
- ◆ The use of a high impedance measuring device with no load from tip to ring at the receive end. This results in reflections due to a bad mismatch at the end of the line, and leads to very peculiar response curves.
- ◆ Ground injected directly onto the tip or ring of the wireline simulator. This almost always leads to a very noisy spectrum, with high background noise levels and often harmonically related spectrum “spikes”.

Appendix D - NOISE GENERATOR CONNECTIONS

The theory behind connecting up the impairments generator to the wireline is simple, but sometimes leads to confusion. When testing access equipment, the tests generally consist of:


1. A pair of modems, the equipment under test.
2. A wireline or wireline simulator, over which the modems communicate
3. One, or sometimes two, impairments (noise) generators, which impair the transmission conditions on the wireline, and make it more difficult for the modems to train up and communicate..
4. A pair of error rate testers (test sets), which send data to and receive data from the modems. These may also perform call set up and termination, and always have some method of determining the quality of the received data.

This is shown here, diagrammatically, assuming one noise generator is used:



Simulators such as the DLS TestWorks DLS 400(E), DLS 200 and DLS 100A can all contain both the wireline simulation and the noise generator, and is the equipment enclosed in the dotted lines. You do not have to worry about connecting wireline simulator and noise generator together because this is already done inside the unit.

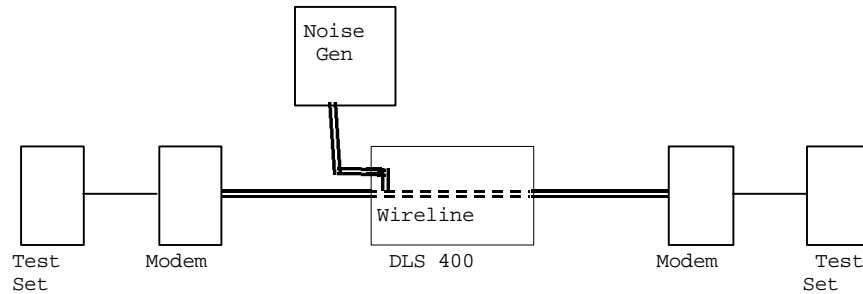
Appendix D

External to the unit, you must connect up the modems using a balanced interface. This balanced line is shown diagrammatically, both inside and outside the unit by the  lines. You just connect up using twisted pair wire—or better, screened twisted pair—from the modems to the DLS unit. It is best to keep the connecting wire short, since then it picks up less noise, and does not give unwanted reflections. Screened twisted pair is better because it picks up less noise, and there is less chance of unwanted crosstalk.

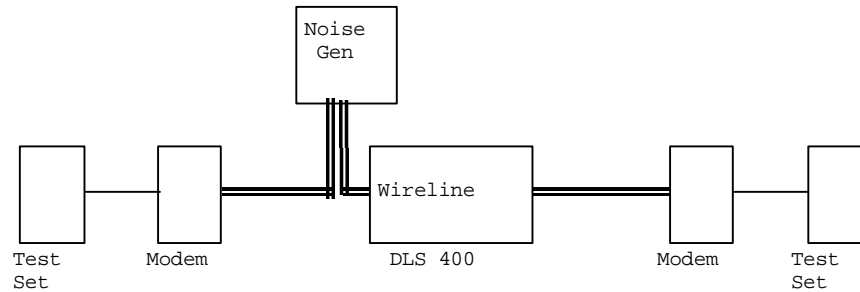
Note that when the noise generator is applied to the line it must not disturb the signals already on the line. Otherwise communication between the modems would be altered. For this reason, the noise generator has a high output impedance. Some people like to look at it as a current generator rather than a voltage generator. All present DLS TestWorks generators have an output impedance of 4 kOhms or more.

Depending on the simulator type, connectors on the DLS may be an RJ45 jack, a Siemens CF connector (which will also take banana plugs) a bantam jack, a terminal strip, or some combination of these. Note that the bantam jack goes under several names, such as mini-bantam, mini 310, bantam telco jack. For the DLS 400, there are bantam jacks front and back and CF connectors on the front. On side A of the unit, all 3 of these connectors are equivalent, and internally connected. You may connect to any or all of them. The same is true for side B. Of course, if you connect to two of them, this joins the two plugs electrically together.

Sometimes you may want to connect the noise generator from, say, an NSA 400 to a wireline simulator such as a DLS 400, if it is not equipped with its own impairments generator. This is easy. Connect the DLS 400, modems, and error rate testers together in the usual way. At the side of the DLS 400 where you want added impairments, plug in one end of your connecting wire to one of the spare connectors on the DLS 400. It is either a bantam jack or a CF connector. Plug the other end in to the NSA 400. The diagram shows the connections together with connections internal to the NSA.



As an alternative, you could use the extra parallel connectors on the NSA 400 to connect the line to the impairments generator like this:



The diagram shows a DLS 400 as the wireline simulator, but it could equally well be a DLS 90, or any other DLS TestWorks line simulator, or even real cable!

The various types of jacks and plugs referred to above are shown in the diagrams below.

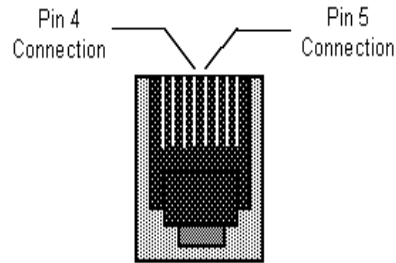


Figure 37 - RJ45 Connector

For the RJ45 connectors, pins 4 and 5, the center 2 pins are the ones which carry the signal. If you wish, you can use an RJ11 plug.

A CF plug looks like the diagram at the right. There are 3 prongs spaced unevenly, as shown. You can use banana plugs if the correctly spaced CF connector is not available.

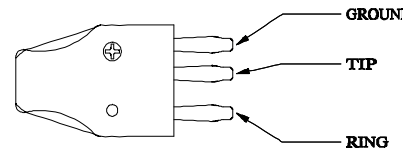


Figure 38 - CF Connector

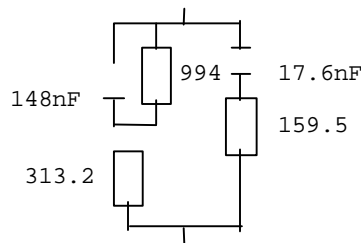
The bantam plug looks like the diagram shown on the right. Its corresponding jack at the back of the NSA 400, as seen on the front panel, is a hole, roughly 1.75" in diameter.



Figure 39 - Bantam Connector

Appendix E - COMMONLY ASKED QUESTIONS

- Q) How much will an impairments module affect the signals travelling along the wireline?
- A) It depends on the loop, the frequency, and the impedance of the modems being tested. For frequencies above 100 kHz, and with a Receiver / Transmitter that provides 135 Ohms, connecting the impairments generator reduces the signal at the receiver by 0.14 dB.
- Q) How can I disconnect the Impairments module completely from the simulated loop?
- A) Turn off all impairments (disconnect from the loop by clicking “off” in the impairments check box).
- Q) What loads do you use to calibrate impairments.
- A) For ISDN and HDSL specified noises, we generally set the loop length to 0, and provide a $67.5\ \Omega$ load at the terminal where the generator is located. Then we measure the voltage. For two types of impairments specified by ANSI, (Crosstalk Noise type ANSI FULL BW, and Powerline Noise type ANSI) we use $135\ \Omega$ in parallel with the ANSI load specified shown below:



For ADSL impairments, which are specified on a 100 Ohm scale, we use a 50 Ohm resistor instead of the 67.5 Ohm resistor.

Appendix E

Q) How does wideband noise in dBm/Hz relate to total noise in dBm?

A) See Appendix A.

Q) Does the loop selected affect the noise level output by the Impairments module?

A) Yes. Since impairments are injected from a $4.05\text{ k}\Omega$ impedance, the power injected on to the loop depends heavily on that impedance. Different loops have different impedances.

Q) Why is the noise not at the calibrated level when injected on to a simulated line?

A) No real loop provides the same load as the one used for calibrating the module, with the possible exception of the ANSI special load, and one of the ANSI loops.

Q) Why do I have to use a balanced meter to measure noise levels from the NSA 400? What happens if I just use the meter that I already have?

A) The Transmitter/Receivers under test provide a balanced load, so we should measure them the same way. Most meters ground one connection. This upsets the simulation at the higher frequencies. Even if the meter is floating, it may be that capacitance to ground from one lead is more than the other, and this can lead to wrong answers.

INDEX

- *ESE, 75
- ADSL A, 25
- ADSL B, 25
- ADSL FEXT, 25, 35, 36, 93, 104
- ADSL NEXT, 28, 30, 59, 62, 92, 104
- AMI, 25, 35, 38, 62, 93, 104
- Common Command, 45, 52, 53, 74, 86
- Communication, 76, 85
- Data format, 52
- Device Clear, 47
- Differential Noise Output, 7
- Downloadable Shapes, 70
- DSL NEXT, 24, 28, 29, 59, 62, 92
- ESB, 47, 49, 50, 74, 77, 80, 81, 82
- ESER, 74, 75
- ESR, 5, 50, 52, 74, 75, 76, 78, 79, 80, 81
- ETSI, 1, 18, 22, 23, 24, 26, 41, 42, 43, 69, 86, 91, 93, 94, 95, 104, 105
- ETSI BASIC, 26
- ETSI HDSL, 18, 26, 41, 94
- External Noise Input, 8
- Fuse, 6, 83, 99
- Fuses, 96
- HDSL NEXT, 24, 28, 30, 59, 62, 92
- HDSL+ADSL, 24, 28, 59, 60, 61, 62
- IEEE, 1, 3, 4, 6, 7, 9, 10, 16, 20, 45, 46, 47, 49, 50, 51, 52, 53, 74, 77, 80, 85, 86, 91, 95
- IFC, 47, 48
- INDEX**, 115
- Installation, 9
- Interface Clear, 47
- ISDN, 20, 22, 23, 42, 86, 91, 94, 104, 113
- LED, 5, 49, 52, 75, 84, 85
- Longitudinal Noise, 8, 22, 23, 24, 42, 68, 94
- Main Screen, 16
- MAV, 47, 49, 50, 77, 80, 81, 82, 85
- Metallic Noise, 22, 42, 67, 68, 94
- Model A, 24, 36, 41, 63, 91, 93, 105
- Model B, 24, 37, 91, 93, 105
- MSS, 77, 78, 80
- Panel, 5, 9, 10
- Power LED, 5
- Powerline, 17, 41, 42, 67, 69, 91, 94, 113
- Protective Grounding, 98, 101
- Query, 75, 76, 78, 81
- Quiet, 59, 69
- Rear Panel, 6
- Remote Control, 7, 95, 96
- Remote LED, 5, 84
- Reset, 77, 95
- RQS, 77, 78, 80
- Safety, 99
- Self-Test, 78, 84
- Serial Poll, 80, 95
- Serial Port, 7
- Shaped Noise Generator, 41, 63, 64, 94
- SRER, 77
- SRQ, 46, 47, 49, 50, 76, 77, 80, 81, 82, 85
- Standards, 18, 22, 86
- Status Byte, 47, 49, 74, 78, 79, 80

Index

STB, 50, 74, 78, 79, 80, 82

Symbols, 101

Synchronization, 76, 79, 81

T1.601, 22, 24, 27, 28, 29, 59, 60, 61,
62, 68, 86, 91, 92, 94, 104

T1E1, 23, 91

Unit Configuration, 16

White Noise Generator, 41, 64, 65, 92

Wireline, 107, 109, 111

Artisan Technology Group is an independent supplier of quality pre-owned equipment

Gold-standard solutions

Extend the life of your critical industrial, commercial, and military systems with our superior service and support.

We buy equipment

Planning to upgrade your current equipment? Have surplus equipment taking up shelf space? We'll give it a new home.

Learn more!

Visit us at [artisan^{tg}.com](https://www.artisantg.com) for more info on price quotes, drivers, technical specifications, manuals, and documentation.

Artisan Scientific Corporation dba Artisan Technology Group is not an affiliate, representative, or authorized distributor for any manufacturer listed herein.

We're here to make your life easier. How can we help you today?

(217) 352-9330 | sales@artisan^{tg}.com | [artisan^{tg}.com](https://www.artisantg.com)

